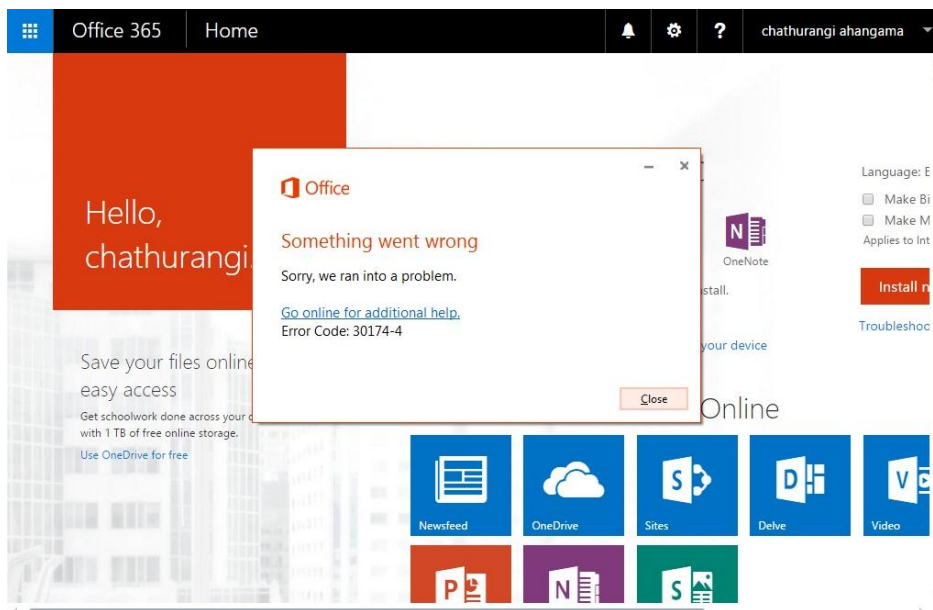


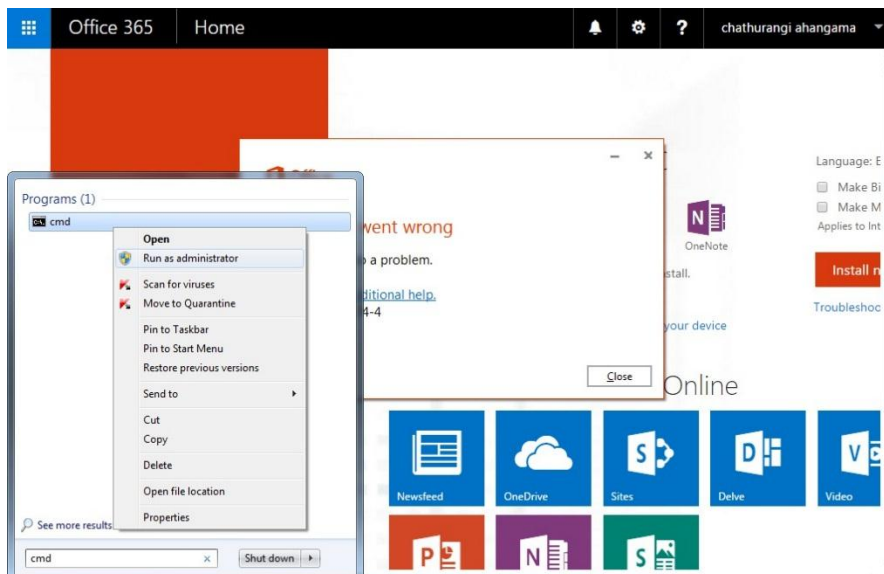
Trouble shooting for when installing office 2013

When you installing office 2013 from OUSL network you will get the following errors

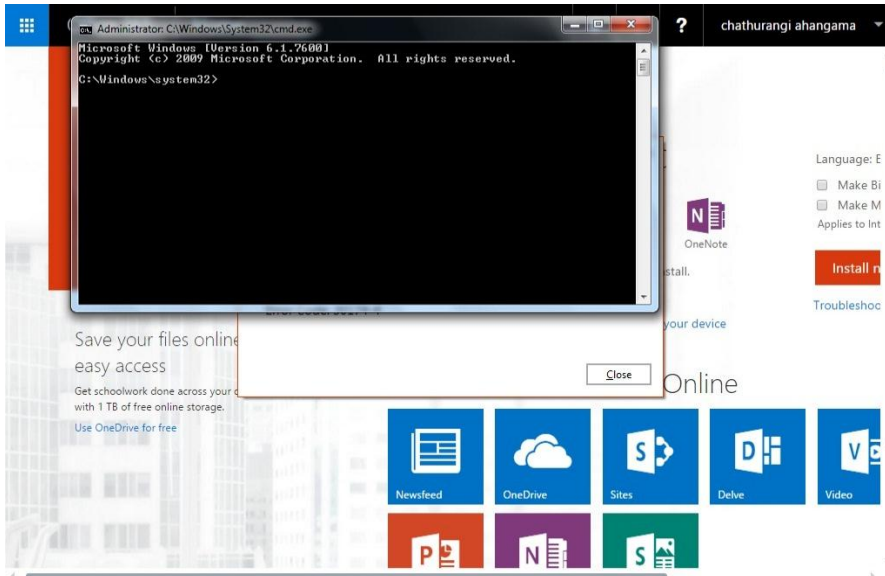


For solve these errors you should go through following steps

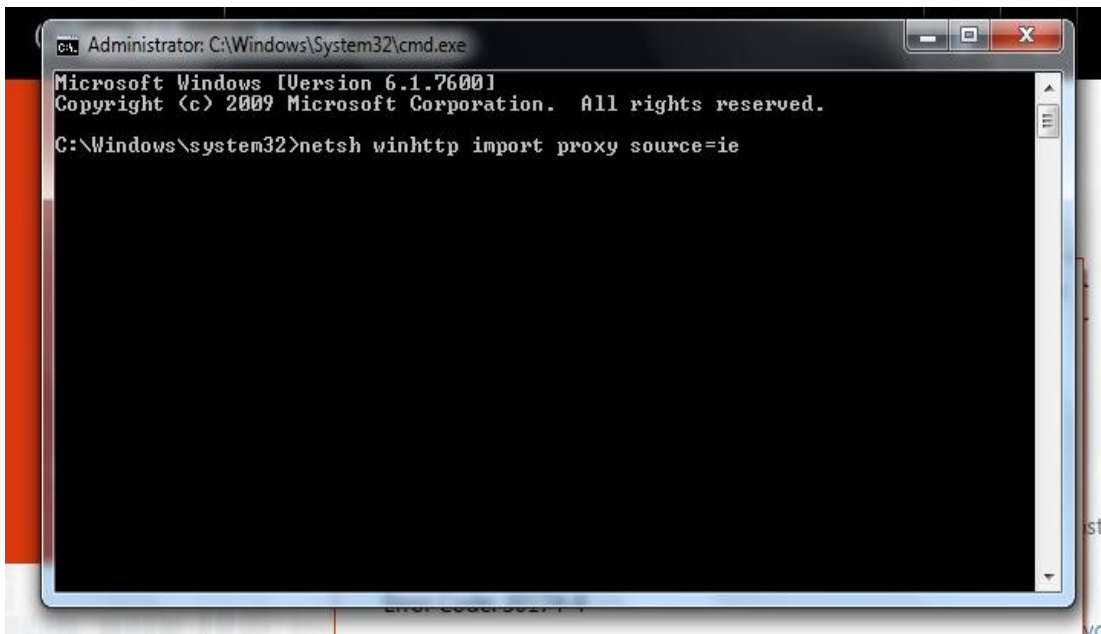
1. Go to command prompt and right click on cmd icon then select "Run as administrator"



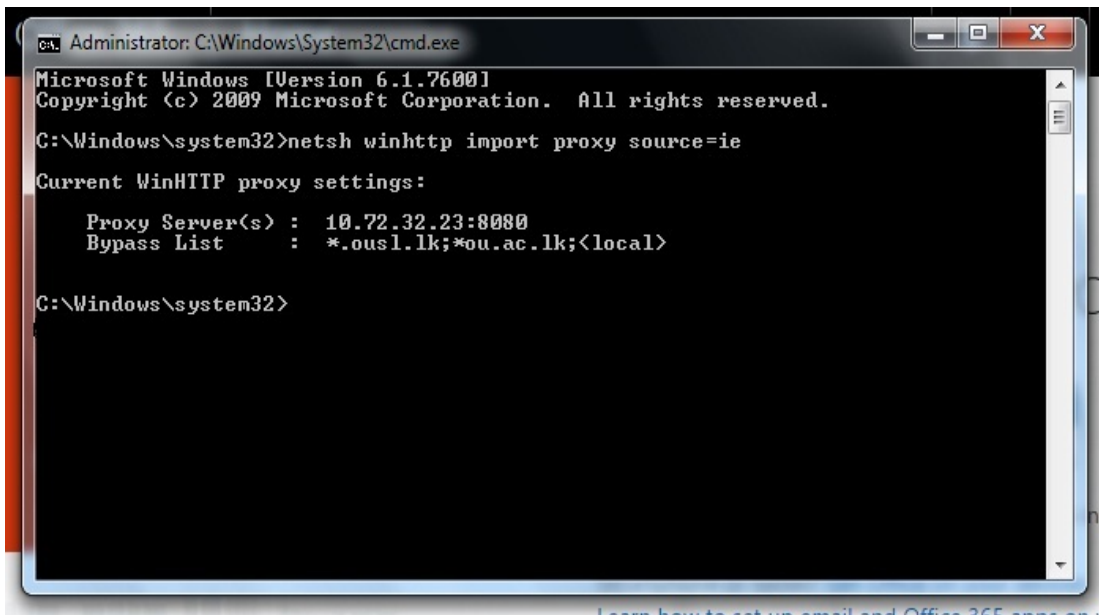
2. Then there will appear this window



3. Type there this command" netsh winhttp import proxy source=ie"



4. Then click enter after there will appear following window



```
Administrator: C:\Windows\System32\cmd.exe
Microsoft Windows [Version 6.1.7600]
Copyright (c) 2009 Microsoft Corporation. All rights reserved.

C:\Windows\system32>netsh winhttp import proxy source=ie

Current WinHTTP proxy settings:
    Proxy Server(s) : 10.72.32.23:8080
    Bypass List     : *.ousl.lk;*ou.ac.lk;<local>

C:\Windows\system32>
```

[Learn how to set up email and Office 365 apps on v](#)

5. You can now install setup file of Microsoft office 2013 by following the official OUSL Guide.