



Open University of Sri Lanka

STATISTICAL HANDBOOK

2017



Open University of Sri Lanka

Vision

“To be the premier Open and Distance Learning institution in Asia through excellence, efficiency and equity in lifelong learning”

Mission

“To enhance access to high quality, affordable and relevant education through Open Distance Education and ensure life-long learning opportunities to face challenges in a knowledge society”

Bringing Education to Your Doorstep!

Table of Contents

Chapter 01	1
1.1. Brief History - Open University of Sri Lanka	1
1.2. OUSL - In brief	2
1.3. Main Programmes of Study	3
1.4. Details of courses where online support is provided	3
1.5. Short Courses	3
1.6. Details of Programmes of Study	4
a. Master Degree Programmes.....	4
b. Post Graduate Diploma Programmes	5
d. Diploma Programmes	6
e. Certificate Programmes	7
f. Short Courses	8
1.7. Organizational Chart.....	10
1.8. Officers of the University.....	11
1.9. Faculty Organization.....	11
a. Faculty of Education	11
b. Faculty of Engineering Technology	12
c. Faculty of Humanities and Social Sciences	12
d. Faculty of Natural Sciences	12
e. Faculty of Health Sciences.....	13
1.10. Library Network.....	13
1.11. Post Graduate Institute of English (PGIE)	14
1.12. General Administration	14
1.13. Financial Administration	14

1.14.	Other Service Divisions.....	15	
1.15.	OUSL Regional Centres and Study Centres.....	16	
	Table 1.15.1 Regional Centres.....	16	
	Table 1.15.2 Study Centres.....	17	
Chapter 02	19	
2.1	Student Enrolment.....	19	
	Table 2.1.1 – Total Student Enrolment (1983 – 2017)	19	
	Chart 2.1.1 Student Enrolment.....	20	
	Table 2.1.2 - Student Enrolment by Faculty and Programme of Study – 2017	21	
	Table 2.1.3 - Student Enrolment by Programme of Study – Undergraduate Level and Above.....	22	
	Table 2.1.4 - Student Enrolment by Programme of Study– Diploma Level and Below	23	
	Chart 2.1.2 - Student Enrolment by Programme of Study – 2017	Chart 2.1.2 - Faculty wise Distribution of Students (2012-2017).....	24
	Table 2.1.5 - Student Enrolment by Gender and Level of Programme of Study	25	
	Chart 2.1.4 - Gender Distribution of Students by Faculty – 2017	Chart 2.1.5 - Gender Distribution of Students by Level of Programme 2012-2017	26
	26	
	Table 2.1.6 - Student Enrolment by Gender and Faculty	27	
	Table 2.1.7 - Student Enrolment by Gender and Programme of Study Undergraduate Programmes	28	
	Table 2.1.8 - Student Enrolment by Gender and Programme of Study Master’s Degree Programmes.....	29	
	Table 2.1.9 - Student Enrolment by Gender and Programme of Study Postgraduate Diploma Programmes	30	
	Table 2.1.10 - Student Enrolment by Gender and Programme of Study Diploma Programmes.....	31	
	Table 2.1.11 - Student Enrolment by Gender and Programme of Study Certificate Programmes	32	
	Table 2.1.12 - Student Enrolment by Medium and Level of Programme of Study.....	33	
	Table 2.1.13 - Student Enrolment by Medium and Faculty	34	
	Table 2.1.14 - Student Enrolment by Medium and Programme of Study Master’s Degree Programmes.....	35	
	Table 2.1.15 - Student Enrolment by Medium and Programme of Study Undergraduate Programmes.....	36	

Table 2.1.16 - Student Enrolment by Medium and Programme of Study Postgraduate Diploma Programmes	37	
Table 2.1.17 - Student Enrolment by Medium and Programme of Study Diploma Programmes	38	
Table 2.1.18 - Student Enrolment by Medium and Programme of Study Certificate Programmes.....	39	
Chart 2.1.6 - Student Enrolment by Medium and Level of Program – 2017	Chart 2.1.7 - Student Enrolment by Medium and Faculty - 2017	41
Table 2.1.19 - Student Enrolment by Centre	42	
Table 2.1.20 - Student Enrolment by Province.....	43	
Table 2.1.21 - Student Enrolment by Centres and Level of Programme of Study.....	44	
Table 2.1.22 - Student Enrolment by Regional Centres.....	45	
Table 2.1.23 - Total Student Enrolment in Colombo Regional Centre	46	
Table 2.1.24 - Total Student Enrolment in Other Centres (Excluding Colombo).....	46	
Chart 2.1.8 - Student Enrolment by Province -2017	Chart 2.1.9 - Student Enrolment by Key Centres 2017.....	47
2.2 New Admissions	48	
Table 2.2.1 - New Admissions by Gender and Level of Programme of Study	48	
Table 2.2.2 - New Admissions by Gender and Faculty	49	
Table 2.2.3 - New Admissions by Gender and Programme of Study - Undergraduate Programmes	50	
Table 2.2.4 - New Admissions by Gender and Programme of Study - Postgraduate Diploma Programmes.....	51	
Table 2.2.5 - New Admissions by Gender and Programme of Study - Master’s Degree Programmes	51	
Table 2.2.6 - New Admissions by Gender and Programme of Study - Diploma Programmes.....	52	
Table 2.2.7 - New Admissions by Gender and Programme of Study Certificate Programmes	53	
2.3. Registration of Students.....	54	
Table 2.3.1. - Registration of Students by Level of Programme of Study – 2016-2017.....	54	
Table 2.3.2 - Registration of Students by Faculty	55	
Table 2.3.3 - Student on Roll and New Registration in Popular Courses – (2016- 2017).....	56	
Chapter 03	58	
3.1 Output – Distribution of Awardees	58	

3.2 Output.....	59
Table 3.2.1 - MPhil and PhD Degree Student Output	59
Table 3.2.2 - Master’s Degree Student Output.....	60
Table 3.2.3 - Postgraduate Diploma Student Output	61
Table 3.2.4 - Graduate Output – bachelor’s Degree Programmes.....	62
Table 3.2.5 - Diploma Student Output.....	63
Table 3.2.6 - Output by Certificate Level.....	64
Table 3.2.7 - Total Output by Faculty	66
Table 3.2.8 - Total Output by Level of Programme of Study.....	66
Table 3.2.9 - Distribution of Output by Faculty – 2017.....	67
Chart 3.2.1 - Distribution of Awards by Faculty - 2017 Chart 3.2.1 - Distribution of Awards by Centres - 2017	68
Table 3.2.10 - Output by Centres	69
3.3 Award of Classes.....	70
Table 3.3.1 - Bachelor’s Degrees	70
Table 3.3.2 - Postgraduate Diplomas.....	71
3.4 Enrolment in Short Courses and Awards	72
Table 3.4.1 - Short Course in Computer Literacy (2016-2017).....	72
Table 3.4.2 - Short Course in Speech and Listening (English) (2016 – 2017)	73
Table 3.4.3 - Short Course in Teaching Children with Learning Disabilities (2016-2017).....	73
Table 3.4.4- Short Course in Multi Grade Teaching (2016-2017).....	74
Table 3.4.5 - Short Courses Conducted by the Faculty of Natural Sciences – (2016-2017).....	74
Table 3.4.6 - Short Course in Tourism & Hotel Operation (2016-2017)	75
Table 3.4.7 - Short Course in Human Resource Management (2016-2017).....	75
Table 3.4.8- Summary - Enrolment in Short Courses and Awards	76
Table 3.4.9 - New Short Courses conducted in 2017	77

Table 3.4.10 – Summary- Enrolment in Short Courses and Awards in centers.....	78
Chapter 04	80
4.1 Employee Statistics	80
Table 4.1.1 - Total Number of Employees – 2017	80
Chart 4.1.1 - Total Number of Employees - 2017	81
4.2 Employment Statistics.....	82
Table 4.2.1 - Total Number of Employees by Positions (2016 – 2017).....	82
Table 4.2.2 - Academic and Academic Support Staff by Cadre Provision and Staff Position – 2017.....	82
Table 4.2.3 - Academic Staff by Category	83
Chart 4.2.1 - Academic Staff by Category (2012 - 2017)	84
Table 4.2.4 - Academic Staff Categorized by Highest Academic Qualifications - 2017	85
Table 4.2.5 - Academic Staff (Permanent Cadre) by Category, Gender and Faculty- 2017.....	86
Table 4.2.6 - Administrative, Professional and Non-Academic Staff by Category – 2017.....	87
Table 4.2.7 – Centre-wise Staff Strength - 2017	93
Chapter 05	95
5.1. Finance.....	95
Table 5.1.1 - Statement of Financial Position	95
Table 5.1.2A – Details of Revenue.....	97
Chart 5.1.1 - Distribution of Revenue (2016-2017)	98
Table 5.1.2B – Details of Expenditure	99
Chart 5.1.2 - Distribution of Expenses (2016 - 2017)	100
Table 5.1.3 - Classification of Expenses by Nature	101
Chart 5.1.3 - Operating Expenses (2016-2017)	102
Table 5.1.4 - Nature of Capital Expenditure (2016 – 2017)	103
Chart 5.1.4 - Distribution of Capital Expenditure	103

Table 5.1.5 - Faculty Wise Income and Expenditure – 2016 /2017.....	104
Chart 5.1.5 - Faculty wise Income & Expenditure – 2016	
Chart 5.1.6 - Faculty wise Income & Expenditure - 2017.....	104
Chapter 06	106
6.1 Academic Support Services	106
6.1.1 Library Network	106
Table 6.1.1 - Collection of Books and Periodicals.....	106
Table 6.1.2 - Library Items – Added Collection (2013 – 2017)	106
Table 6.1.3 - Digital Collection	107
Table 6.1.4 - Distribution of Member Enrolment	107
Table 6.1.5 - Number of Physical Visits by Users	108
Table 6.1.6 - Online Visits by Users	108
Table 6.1.7 - Audio Visual Resource Centre - Capacity (2012 – 2017)	108
Table 6.1.8 – Reader Services Statistics of Main Library during (2016 - 2017)	108
Table 6.1.9 - Details of Programme, Seminars & Workshops held during 2017	109
6.2 Centre for Educational Technology and Media (CETMe).....	110
Table 6.2.1 - Performances by the Centre for Educational Technology and Media (CETMe).....	110
6.3 Printing Press.....	111
Table 6.3.1 - Printing of Material by the Press of the OUSL.....	111
6.4 Staff Development Centre	112
Table 6.4.1 – Workshops Conducted By Sdc In Year 2017	112
6.5 Residential Facilities	113
Table 6.5.1 - Accommodations Available under Temporary Residential Facility (TRF).....	113
Table 6.5.2 - Guest House Facilities Available at Regional Centres.....	113
Chapter 07	115
7.1. Buildings and Floor Areas.....	115

Table 7.1.1 - Faculties and Administrative Service Areas (Main Campus) 2017	115
Table 7.2 - Other Service Areas 2017	116
Table 7.3 - Regional and Study Centres 20176.....	116

Chapter 01

OUSL at a Glance

Chapter 01

1.1. Brief History - Open University of Sri Lanka

The Open University of Sri Lanka (OUSL) was established as a national single mode distance teaching University in 1980 under the Universities Act No. 16 of 1978 and the Open University of Sri Lanka Ordinance No. 03 of 1980. The University incorporated within its system the External Services Agency (ESA) and the Sri Lanka Institute of Distance Education (SLIDE). The Open University is one of the 15 national Universities enjoying the same legal, institutional and academic status as any other national University in Sri Lanka. However, it differs from the other national Universities because of its dependence on open distance learning philosophy to expand opportunities for higher education regardless of age, previous qualifications, income, geographic and employment barriers. The OUSL commenced its Academic activities on 22nd July 1980 with Dr Gamani Corea as the Chancellor and Professor PD Gunatillake as the Vice Chancellor.

The OUSL is unique within the University system because of its significant feature of offering programmes of study leading to certificate, diploma, degree, postgraduate diploma and postgraduate degree through the distance mode. In a context where access to higher education is limited due to lack of places in the conventional university system, the OUSL has contributed considerably to meet the needs of the country by providing opportunities to gain advanced degrees for the adult population and thereby ensuring the professional development of the work force.

The OUSL which opened its doors with nearly 4000 students has now been expanded to accommodate a student population of approximately 40,000 from all over the island. The strength of the OUSL by the year 2017 is manifest from 25 academic departments attached to five Faculties. The regional service network of the OUSL includes 09 Regional Centres and 18 Study Centres scattered all over the island. Its sixty-nine (69) academic programmes include 20 Certificate Programmes, 09 Diploma Programmes, 14 Undergraduate Programmes, 07 Postgraduate Diploma Programmes, 14 Master Degree Programmes in addition to MPhil and PhD degree programmes. The university further offers 05 other courses for regular students and about 24 short courses.

The staff strength by the year 2017 stood at 327 Teaching staff (Permanent Cadre) and 664 nonacademic staff (Permanent Cadre) to cater to the needs of the student community. The achievements of the OUSL have been significant over the years and this increasing trend would undoubtedly be further strengthened.

1.2. OUSL - In brief

Faculties		05
Academic Departments		25
Postgraduate Institutes	Postgraduate Institute of English (PGIE)	01
Centres	Centre for Environmental Science and Sustainable Development (CESSD)	01
	Centre for Educational Technology and Media (CETMe)	01
	Industry Liaison Centre (ILC)	01
	Staff Development Centre (SDC)	01
	Centre for Gender equity and Equality (CGEE)	01
Library Network	Main Library	01
	Regional Centre Libraries	07
	Study Centre Libraries	07
Special Units	Research Unit	01
	Career Guidance Unit (CGU)	01
	International Relations Unit (IRU)	01
	Internal Quality Assurance Unit (IQAU)	01
	Foundation Academic Unit (FAU)	01
	National Online Distance Education Service (NODES)	01
	Learner Support Unit (LSU)	01
Regional Centres		08
Study Centres		18
Programmes on offer		62
Students on Roll in the Year 2017 (as at 31 December 2017)		39,381
Number of Academic Staff (permanent cadre)		327
Students Awarded PhD/MPhil/Master Degrees/PG Diplomas/Bachelor Degrees/Diplomas/Certificates in the year 2017		6,437

1.3. Main Programmes of Study

	Education	Engineering	Humanities	Natural Sciences	Health Sciences	PGIE	OUSL	Total
Higher Degree Programmes	04	03	04	02	-	02	-	14
Postgraduate Diploma Programmes	02	03	00	01	-	01	-	07
Undergraduate Programmes	03	03	04	01	03	-	-	14
Diploma Programmes	01	01	03	04	-	-	-	09
Certificate Programmes	02	01	09	08	-	-	-	20
Other Programmes	01	01	-	01	-	-	02	05
Total Programmes	13	12	20	17	03	03	02	69

1.4. Details of courses where online support is provided

	Education	Engineering	Humanities	Natural Sciences	Health Sciences	PGIE	CETMe	CESSD	CGU	Total
Courses in Programmes Assisted by Online	06	73	15	37		-	02	04	-	137

1.5. Short Courses

	Education	Engineering	Humanities	Natural Sciences	Health Sciences	PGIE	CETMe	CESSD	CGU	Total
Short Courses	06	03	06	02		02	04	-	01	24

1.6. Details of Programmes of Study

a. Master Degree Programmes

Programme of Study	Faculty	Number of Credits	Minimum Duration (in months)	Medium		
				Sinhala	Tamil	English
Master of Education (M. Ed)	Education	54	24	x	x	x
Master of Arts in Teacher Education (MATE)		54	18	x	x	x
Master of Arts in Teacher Education - International (MATE-I)		54	18	x	x	x
Master of Technology in Construction Management	Engineering Technology	72	24	-	-	x
Master of Technology in Industrial Engineering		72	24	-	-	x
Master of Technology in Apparel Production and Management		72	24	-	-	x
Master of Development Studies & Public Policy	Humanities and Social Sciences	72	24	-	-	x
Master of Business Administration in Human Resource Management		72	24	-	-	x
Master of Laws in Criminal Justice Administration		36	24	-	-	x
Commonwealth Executive MBA/MPA		90	24	-	-	x
Master of Environmental Science	Natural Sciences	72	24	-	-	x
Master of Science in Medical Entomology and Parasitology		36	24	-	-	x
Master of Arts in Teaching English as a Second Language	Post Graduate Institute of English	60	24	-	-	x
Master of Arts in Teaching Literature in a Second Language context		72	24	-	-	x

b. Post Graduate Diploma Programmes

Programme of Study	Faculty	Number of Credits	Minimum Duration (in months)	Medium		
				Sinhala	Tamil	English
Post Graduate Diploma in Special Needs Education (PGDSNE)	Education	45	15	x	x	x
Post Graduate Diploma in Education (PGDE)		45	15	x	x	x
Post Graduate Diploma in Construction Management	Engineering Technology	36	12	-	-	x
Post Graduate Diploma in Industrial Engineering		36	12	-	-	x
Post Graduate Diploma in Apparel Production and Management		36	12	-	-	x
Post Graduate Diploma in Environmental Science	Natural Sciences	54	18	-	-	x
Post Graduate Diploma in Teaching English as a Second Language	Post Graduate Institute of English	51	18	-	-	x

c. Undergraduate Programmes

Programme of Study	Faculty	Number of Credits	Minimum Duration (in months)	Medium		
				Sinhala	Tamil	English
Bachelor of Education (Natural Sciences)	Education	144	48	x	x	x
Bachelor of Education (Drama & Theatre)		144	48	x	-	-
Bachelor of Special Needs Education		144	48	-	-	x
Bachelor of Technology	Engineering Technology	205	48	-	-	x
Bachelor of Industrial Studies		160	48	-	-	x
Bachelor of Software Engineering		150	48	-	-	x
Bachelor of Laws	Humanities and Social Sciences	144	48	x	x	x
Bachelor of Management Studies		144	48	-	-	x
Bachelor of Arts in Social Science		108	36	-	-	x
Bachelor of English & English Language Teaching		147	48	-	-	x
Bachelor of Science	Natural Sciences	108	36	x	x	x
Bachelor of Science (Special)		144	48	x	x	x
Bachelor of Science in Nursing	Health Sciences	144	48	-	-	x
Bachelor of Pharmacy		144	48	-	-	x
Bachelor of Medical Laboratory Science (BMLS)		144	48	-	-	x

d. Diploma Programmes

Programme of Study	Faculty	Number of Credits	Minimum Duration (in months)	Medium		
				Sinhala	Tamil	English
Diploma in Early Childhood & Primary Education (DECPE)	Education	72	24	x	-	x
Diploma in Information Systems & Technology	Engineering Technology	36	12	-	-	x
Diploma in English	Humanities and Social Sciences	72	24	-	-	x
Diploma in English Language & Literature		36	12	-	-	x
Diploma in Youth in Development Work		72	24	x	x	x
Diploma in Microbiology	Natural Sciences	36	12	-	-	x

e. Certificate Programmes

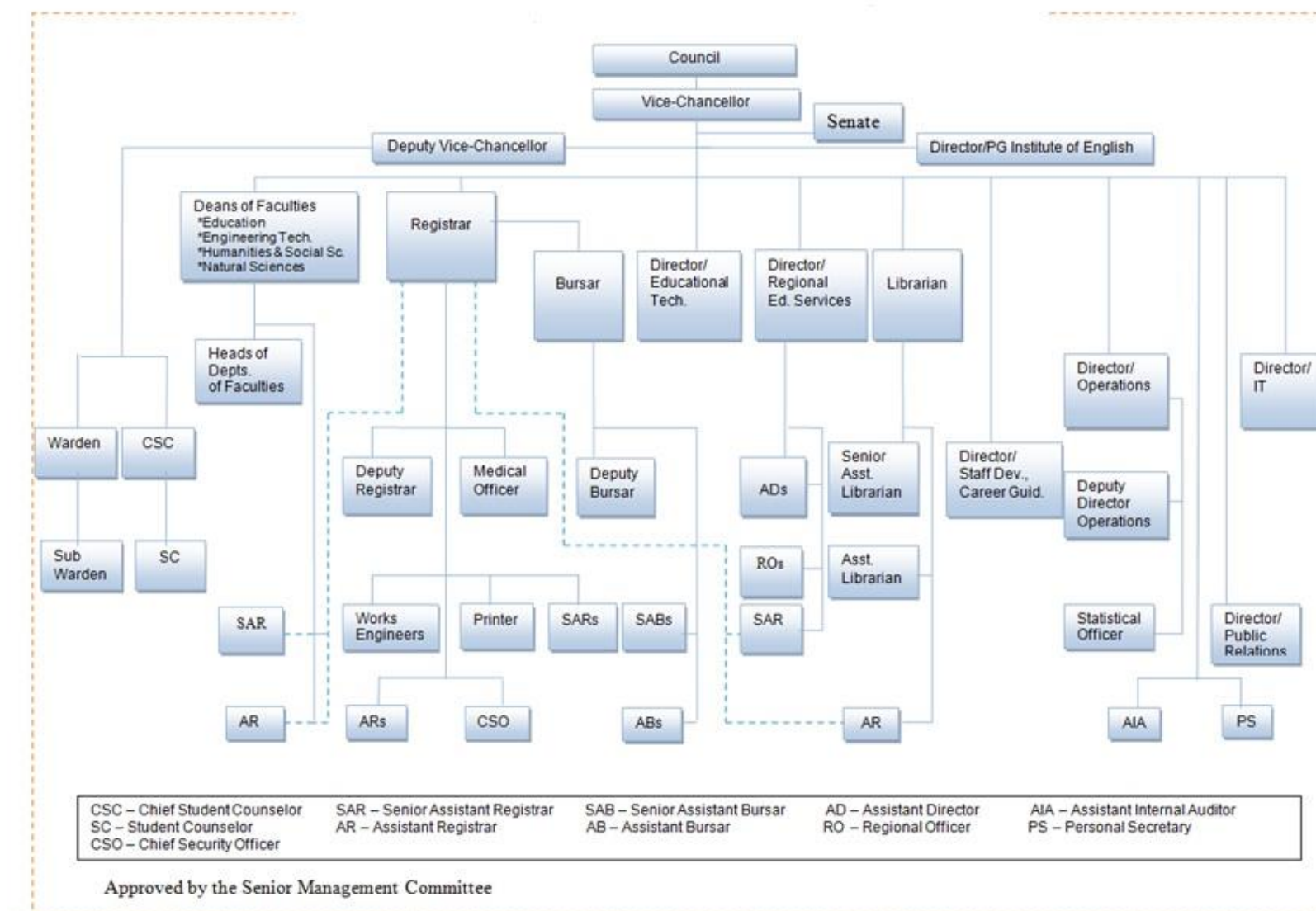
Programme of Study	Faculty	Number of Credits	Minimum Duration (in months)	Medium		
				Sinhala	Tamil	English
Certificate in Pre-School Education	Education	36	12	x	x	x
Advanced Certificate in Pre-School Education		36	12	x	-	x
Certificate in Industrial Studies	Engineering Technology	36	12	x	-	x
Certificate in Entrepreneurship & Small Business Management	Humanities and Social Sciences	36	12	x	x	x
Certificate in Basic Sinhala		18	12	-	x	x
Certificate in Social Sciences		72	24	x	x	x
Beginners Course in Tamil		18	12	x	-	x
Advanced Certificate in Tourism Operations		36	12	-	-	x
Advanced Cert. in English for Business & Professional Communications stage I		18	4 ½	-	-	x
Advanced Cert. in English for Business & Professional Communications stage II		24	4 ½	-	-	x
Advanced Certificate in English		18	12	-	-	x
Advanced Certificate in Laboratory Technology		Natural Sciences	39	12	-	-
Certificate in Laboratory Technology	21		12	-	-	x
Certificate in Wild Life Conservation	18		12	x		x
Certificate in Environmental Studies	18		12	-	-	x
Certificate in Applied Electronics	21		06	-	-	x
Certificate in Professional Computer Applications	18		06	-	-	x
Certificate in Computer Networks & Security	18		06	x	-	x

f. Short Courses

Title of the Short Course	Faculty/Institute/Centre
Workshop on Autism- Sinhala	Faculty of Education
Short course on Research Methodology- Sinhala	
Short course on Research Methodology- English	
Short training course for untrained teachers who works in Arabic College	
Short course on teaching children with learning disabilities- English	
Short course on teaching children with learning disabilities- Sinhala	
Short course on Special needs Education at MI College – Maldives	
Short course on multi-grade teaching	
Workshop on supporting Pre-school children with special education needs- Sinhala	
Short course in professional web development using Joomla and WordPress	Faculty of Natural Sciences
Short course in ICT for beginners	
Short course in computer networks and security	
Short course in professional computer applications	
Short course in Plant Breeding Techniques	
Certificate in Office Applications	Faculty of Engineering Technology
Short course in AutoCAD Drafting and Modeling	
Certificate in dynamic web design	
Certificate in graphic design	

Certificate in application of Office package and Database management		
Certificate in Database and Network design management		
Certificate in Computerized Accounting Package		
Professional certificate in Desktop publishing and Graphic design		
Short course in Listening and Speech	Faculty of Humanities and Social Sciences	
Short course in Human Resource management		
Short course in Marketing management		
Short course in Tourism and Hotel Operation		
Short course in Spoken Tamil		
Short course on Korean Language- Basic		
Short course on Korean Language- Intermediate		
Short English course for lawyers of Legal Aided Commission (English for Legal Studies)		
Short English course for stenographers of Legal Aided Commission (Listening and Writing)		
Short Course in Critical Literary Reading Skills		Post Graduate Institute of English (PGIE)
Short Course in Teaching Literature at GCE (A/L)		
Short Course in Testing and Evaluation in English as a Second Language		
Foundation in OUSL	Foundation Academic Unit (FAU)	

1.7. Organizational Chart



1.8. Officers of the University

Chancellor	Prof. Colvin Gunaratne
Vice Chancellor	Prof. SA Ariadurai
Deputy Vice Chancellor	Prof. GMKB Gunaherath
Dean: Education	Prof. PCP Jaufar
Dean: Engineering Technology	Dr. KAC UdayaKumar
Dean: Humanities and Social Sciences	Dr. NS Abeysinghe
Dean: Natural Sciences	Prof.(Ms) LK Senaratne
Dean: Health Sciences	Prof.(Ms) GRR Ranawaka
Registrar	Ms. WLW Jayasena
Bursar	Mr. Anura Wickramasinghe
Librarian	Dr.(Ms) W Seneviratne

1.9. Faculty Organization

a. Faculty of Education

Dean	Prof. PCP Jaufar
Head/ Secondary and Tertiary Education	Dr.(Ms)S Kugamoorthy
Head/ Early Childhood and Primary Education	Ms. DMW Munasinghe
Head/Special Needs Education	Dr. KAC Alwis
Assistant Registrar	Ms. KPP Dilrukshi

b. Faculty of Engineering Technology

Dean	Dr. KAC Udayakumar
Head /Agricultural and Plantation Engineering	Dr. (Ms) NS Weerakkody
Head /Civil Engineering	Mr. MNC Samarawickrama
Head /Electrical and Computer Engineering	Dr. KGHUW Ratnayake
Head /Mathematics and Philosophy of Engineering	Ms. PYAGS Yapa
Head /Mechanical Engineering	Mr. DC Wijewardena
Head /Textile and Apparel Technology	Dr. CN Herath
Assistant Registrar	Mr. EAD Sampath Udayanga

c. Faculty of Humanities and Social Sciences

Dean	Dr. NS Abeysinghe
Head /Language Studies	Dr. Ms. VV Medawattegedara /Dr. Ms. KRM De Silva
Head /Legal Studies	Ms. HND Gamalath
Head /Management Studies	Mr. V Sivalogathan
Head /Social Studies	Dr. SN Morais
Assistant Registrar	Ms. K. Sivashankary

d. Faculty of Natural Sciences

Dean	Prof. LK Senaratne
Head /Botany	Mr. BKL Wickramasinghe
Head /Chemistry	Ms. MNK De Zoysa
Head /Mathematics and Computer Science	Ms. MAP De Silva
Head /Physics	Prof. VPS Perera
Head /Zoology	Ms. EADND Edirisinghe
Assistant Registrar	Ms. CY Munasinghe

e. Faculty of Health Sciences

Dean	Prof.(Ms) GRR Ranawaka
Head /Pharmacy	Ms. PWGDP Samarasekara
Head /Nursing	Ms. AVP Madhavi
Head /Basic Sciences	Prof. R Fernando
Head/Psychology and Counselling	Prof. GRR Ranawake (Actg.)
Head/Medical Laboratory Sciences	Mr. BSS De Silva
Assistant Registrar	Ms. SADDN Samarasinghe

1.10. Library Network

Librarian	Dr. RCWMRW Seneviratne	OUSL (Main Library)
Deputy Librarian (Acquisition)	Ms. KMRK Amarasekara	OUSL (Main Library)
Senior Asst. Librarian (Reader Services)	Ms. HPSD Gunasekera	OUSL (Main Library)
Senior Asst. Librarian (Periodicals & Inquiries)	Dr (Ms) IDAL Wijyaratne	OUSL (Main Library)
Senior Asst. Librarian (Cataloguing)	Mr. RM Gunasekara	OUSL (Main Library)
Senior Assistant Librarian (Systems)	Mr. AHK Balasooriya	OUSL (Main Library)
Assistant Librarian	Dr.(Ms) WRWM Anoma Weerakoon	Regional Centre (Kandy)
Assistant Librarian	Ms. HMP Pumali Karunarathna	Regional Centre (Anuradhapura)
Assistant Librarian	Ms. PKM Kaushamalika	Regional Centre (Matara)
Assistant Librarian	Ms. MMIK Marasinghe	OUSL (Main Library)
Senior Assistant Registrar	Vacant	

1.11. Post Graduate Institute of English (PGIE)

Director	Dr. HS Rambukwella
Senior Assistant Registrar	Mr. WDT Thilakeratne
Assistant Bursar	Ms. SMPA Subani

1.12. General Administration

Academic Division	Deputy Registrar- Ms. K Suresh
Capital Works Division	Assistant Registrar -Mr. DSD Kasun
Establishments Division	Senior Assistant Registrar - Ms. SMDB Jayawardena Senior Assistant Registrar -Mr. ND Kuruppuarachchi
Examination Division	Senior Assistant Registrar -Ms. PI Irani Pathirana
General Administration Division	Senior Assistant Registrar -Ms. DDGPS Daniels
Internal Audit	Assistant Internal Auditor - Ms. HKRU Ranasinghe
Legal and Documentation Division	Senior Assistant Registrar - Ms. RLW Rajapakse
Student Affairs Division	Senior Assistant Registrar -Ms. HAAI Hettiarachchi
Vice Chancellor's Office	Senior Personal Secretary -Ms. Sumithra Perera

1.13. Financial Administration

Bursar	Ms. NTA Weerasinghe (Acting)
Deputy Bursar	Mr. OKSP Ovitigala
Senior Assistant Bursar	Ms. NTA Weerasinghe
Senior Assistant Bursar	Ms. KK Chethiyamali
Assistant Bursar	Ms. TT Udayangani
Assistant Bursar	Mr. Dayal Abhayasinghe
Assistant Bursar	Mr. KGDB Katupulle

1.14. Other Service Divisions

Centre for Environmental Science and Sustainable Development	Director – Dr. Ms. TK Weerasinghe
Centre for Educational Technology and Media (CETMe)	Acting Director -Dr. Jayantha Wattevidanage
Career Guidance Unit (CGU)	Director - Ms. ALKA Ekanayake (on contract)
Regional Educational Services (RES)	Actg. Director - Dr. KH Jayawardena
Research Division	Director - Prof. S Iqbal
International Relations Unit (IRU)	Director - Prof. JCN Rajendra
Industry Liaison Centre (ILC)	Director – Dr. AP Madurapperuma
Health Centre	Medical Officer- Dr. DRS Peiris (on contract)
Information Technology (IT)	Director- Mr. U Jayamanne
Maintenance Division	Works Engineer - Mr. RADIC Rathnayake Works Engineer- Mr. LA Harischandra Curator - Mr. WDN Warigajesta
Operation Division	Mr. BMP Somaratne (on contract)
Press	Officer in Charge - Mr. BADJ Balachandra (on contract) Assistant Printer – Mr. AKM Kularatne Assist. Bursar- Mr. HLPD Abhayasinghe
Public Information Division (PID)	Acting Director - Mr. S Thilakawardena
Security Division	Chief Security Officer- Mr. WBC Wedagedara
Staff Development Centre (SDC)	Director-Dr. (Ms) DDM Ranasinghe

1.15. OUSL Regional Centres and Study Centres

Table 1.15.1 Regional Centres

Location	Officer in - Charge
Anuradhapura	Assistant Director - Ms. ERNMMWWSK Madugalle
Badulla	Assistant Director - Ms. HNK Galahitiyawa
Batticaloa	Snr. Assistant Director - Mr. AD Kamalanathan Assistant Director - Mrs. AMF Nazeefa
Colombo	Assistant Director - Ms. WKR Sadeesha Assistant Director - Ms. UHBVP Angammana
Jaffna	Assistant Director- Mr. K Kanthavel
Kandy	Assistant Director - Mr. A Bandara
Kurunegala	Assistant Director - Mr. MB Sakalasooriya
Matara	Assistant Director - Mr. G Dinesh
Ratnapura	Assistant Director - Dr. Ms. UWNP Wanigasekara

Table 1.15.2 Study Centres

Location	Officer in Charge
Ambalangoda	Assistant Director - Mr. KR De Silva
Ambalantota	Assistant Director - Mr. AGA Sampath
Ampara	Assistant Director - Mrs. K.Saranyah
Bandarawela	Assistant Director - Mr. AMSD Adikari
Galle	Assistant Director - Mr. T.G.N.Kariyawasam
Gampaha	Assistant Director – Ms.HMCRK Herath
Hatton	Acting Assistant Director - Mr. AMSD Adikari
Kalutara	Assistant Director - Ms. YMC Nisansala
Kegalle	Assistant Director - Ms. RTS Fernando
Killinochchi	Assistant Director - Mr. N.Camilus
Kuliyapitiya	Assistant Director – Ms.HAKJM Hettiarachchi
Mannar	Acting Assistant Director - Mr. K Kanthavel
Monaragala	Acting Assistant Director - Ms. HNK Galahitiyawa
Mullaitivu	Assistant Director - Mr. P.Divaagar
Polonnaruwa	Acting Assistant Director – Ms.RYH Perera
Puttalam	Assistant Director - Mr. WM Senivirathana
Ratnapura	Assistant Director-Dr.Ms.UWNP Wanigasekara
Trincomalee	Assistant Director - Mr. O Aroos
Vavuniya	Assistant Director- Mr. V.Thivaskar

Chapter 02

Student Enrolment

Chapter 02

2.1 Student Enrolment

Table 2.1.1 – Total Student Enrolment (1983 – 2017)

Year	No. of Students
1982	4000
1983	7611
1984	6457
1985	9279
1986	10167
1987	13119
1988	13197
1989	13355
1990	14702
1991	14763
1992	16286
1993	16757
1994	19529
1995	18473
1996	16948
1997	16989
1998	17013
1999	17234

Year	No. of Students
2000	18744
2001	19385
2002	21110
2003	23508
2004	24692
2005	24373
2006	24846
2007	25251
2008	27121
2009	26395
2010	30469
2011	34095
2012	35647
2013	38294
2014	41344
2015	42911
2016	40230
2017	39381

Chart 2.1.1 Student Enrolment

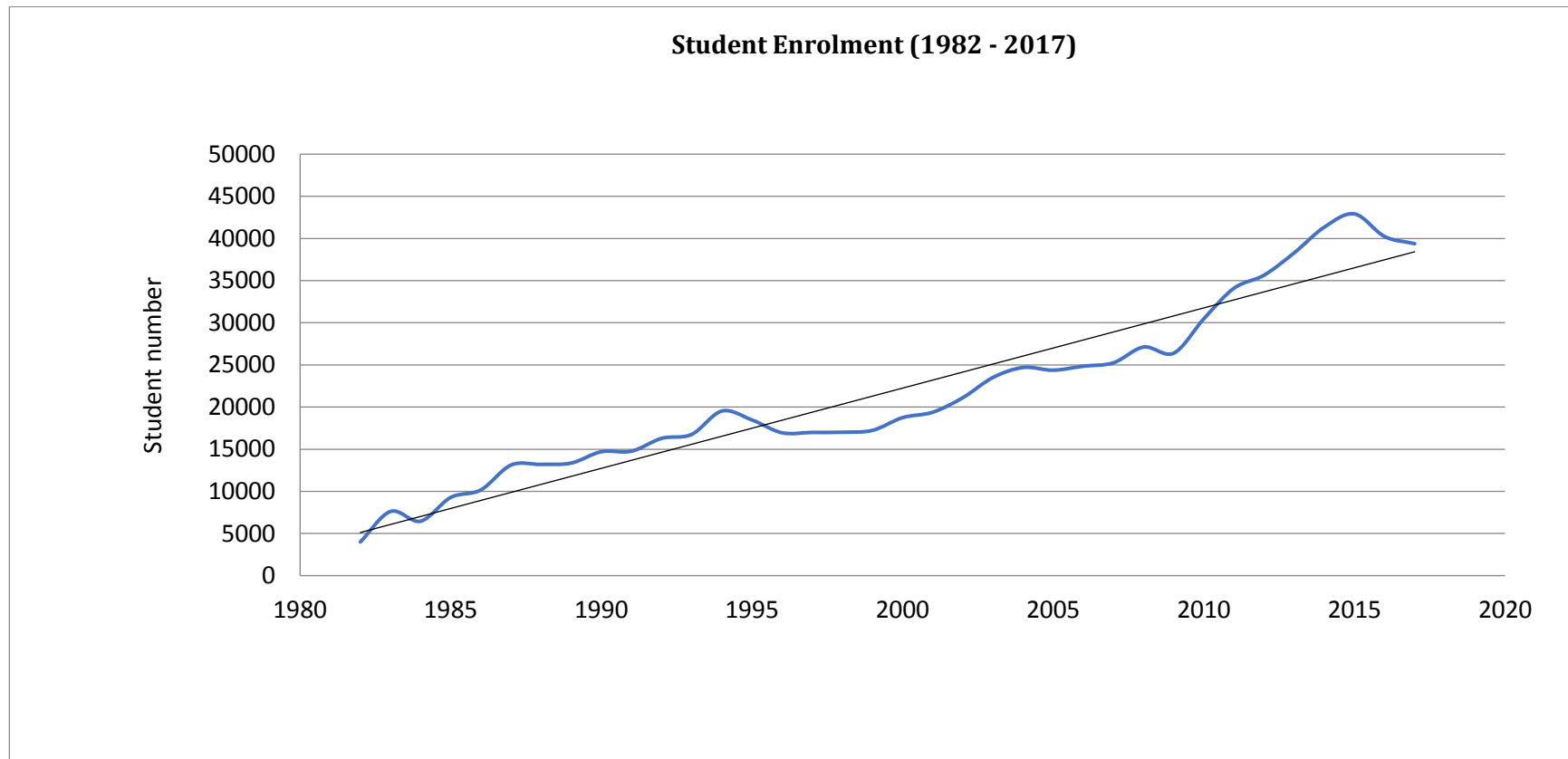


Table 2.1.2 - Student Enrolment by Faculty and Programme of Study - 2017

Level of Programmes	Number of Students													
	Education	%	Engineering Technology	%	Humanities and Social Science	%	Natural Science	%	Health Science		OUSL-common to all faculties	%	Total	%
Master Degree Programmes	700	7.37	25	0.42	422	2.73	127	2.88	-	-	-	-	1274	3.24
%	54.95	-	1.96	-	33.12	-	9.97	-	-	-	-	-	100.00	-
Post Graduate Diploma Programmes	6298	66.27	48	0.81	-	-	-	-	-	-	-	-	6346	16.11
%	99.24	-	0.76	-	-	-	-	-	-	-	-	-	100.00	-
Undergraduate Programmes	293	3.08	5531	93.08	10839	70.18	4002	90.79	3689	-	-	-	24354	61.84
%	1.20	-	22.71	-	44.51	-	16.43	-	15.15	-	-	-	100.00	-
Diploma Programmes	1510	15.89	207	3.48	278	1.80	105	2.38	-	-	-	-	2100	5.33
%	71.90	-	9.86	-	13.24	-	5.00	-	-	-	-	-	100.00	-
Certificate Programmes	703	7.40	131	2.20	3906	25.29	99	2.25	-	-	-	-	4839	12.29
%	14.53	-	2.71	-	80.72	-	2.05	-	-	-	-	-	100.00	-
Foundation Programmes	-	-	-	-	-	-	75	1.70	-	-	393	100.00	465	1.19
%	-	-	-	-	-	-	15.48	-	-	-	84.52	-	100.00	-
Total	9504	100.00	5942	100.00	15445	100.00	4408	100.00	3689		393	-	39381	-
%	24.13	-	15.09	-	39.22	-	11.19	-	9.37	-	1.00	-	100.00	100.00

Table 2.1.3 - Student Enrolment by Programme of Study – Undergraduate Level and Above

Level of programme	Faculty	2016	2017
		Number of student	
Master's Degree	Education	465	700
	Engineering Technology	30	25
	Humanities and Social Sciences	458	422
	Natural Science	125	127
	Total	1078	1274
	%	2.68	3.24
Post graduate Diploma	Education	6268	6298
	Engineering Technology	41	48
	Natural Science	21	-
	Total	6330	6346
	%	15.75	16.11
Bachelor's Degree	Education	224	293
	Engineering Technology	4834	5531
	Humanities and Social Sciences	9919	10839
	Natural Science	4000	4002
	Health Science	3569	3689
	Total	22546	24354
	%	56.08	61.84
Grand Total		29954	31974
%		74.51	81.19

Table 2.1.4 - Student Enrolment by Programme of Study- Diploma Level and Below

Level of programme	Faculty	2016	2017
		Number of student	
Diploma	Education	531	1510
	Engineering Technology	78	207
	Humanities and Social Sciences	299	278
	Natural Science	50	105
	Health Science	01	-
	Total	959	2100
	%	9.36	28.35
Certificate	Education	837	703
	Engineering Technology	114	131
	Humanities and Social Sciences	3675	3906
	Natural Science	201	99
	Total	4827	4839
	%	47.33	65.33
Foundation Programme	Engineering Technology	150	-
	Natural Science	76	-
	Education	08	75
	OUSL Common to all Facilities	4223	393
	Total	4457	468
	%	43.51	6.32
Grand Total		10243	7407
%		100	100

Chart 2.1.2 - Student Enrolment by Programme of Study – 2017

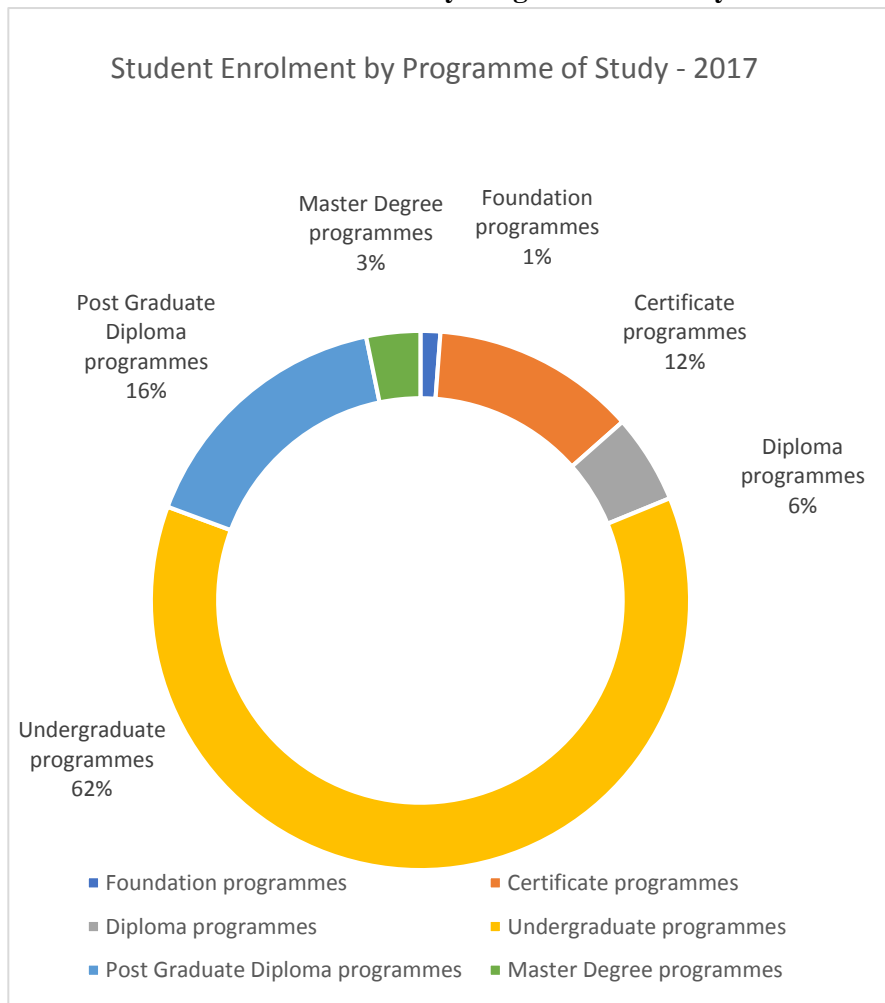


Chart 2.1.2 - Faculty wise Distribution of Students (2012-2017)

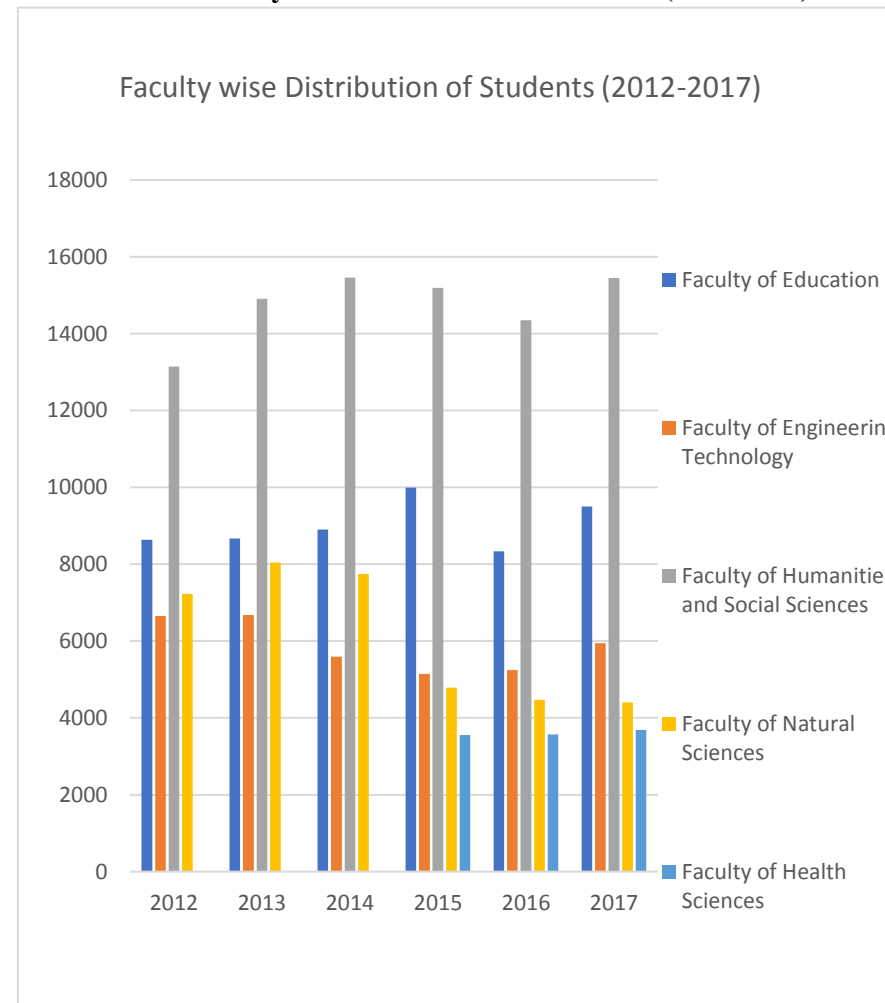


Table 2.1.5 - Student Enrolment by Gender and Level of Programme of Study

Level of Programme	2016		2017	
	Number of Students			
	Female	Total	Female	Total
Master's Degree Programme	514	1078	701	1274
%	47.68	100.00	55.02	100
Postgraduate Diploma Programmes	4424	6330	4512	6346
%	69.89	100.00	71.1	100
Under graduate Programmes	13220	22546	14463	24354
%	58.64	100.00	59.39	100
Diploma Programmes	736	959	1645	2100
%	76.75	100.00	78.33	100
Certificate Programmes	3210	4827	3187	4839
%	66.50	100.00	65.86	100
Foundation Programmes	1981	4457	218	468
%	44.45	100.00	46.58	100
Total	24085	40197	24726	39381
%	59.91	100.00	62.69	100

Chart 2.1.4 - Gender Distribution of Students by Faculty – 2017

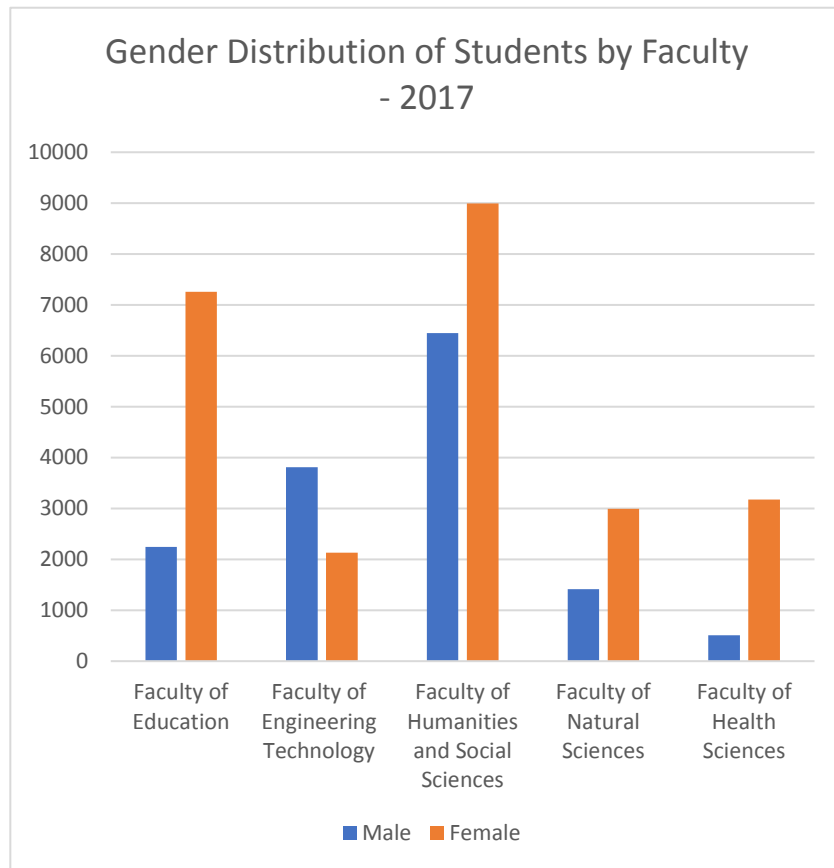


Chart 2.1.5 - Gender Distribution of Students by Level of Programme 2012-2017

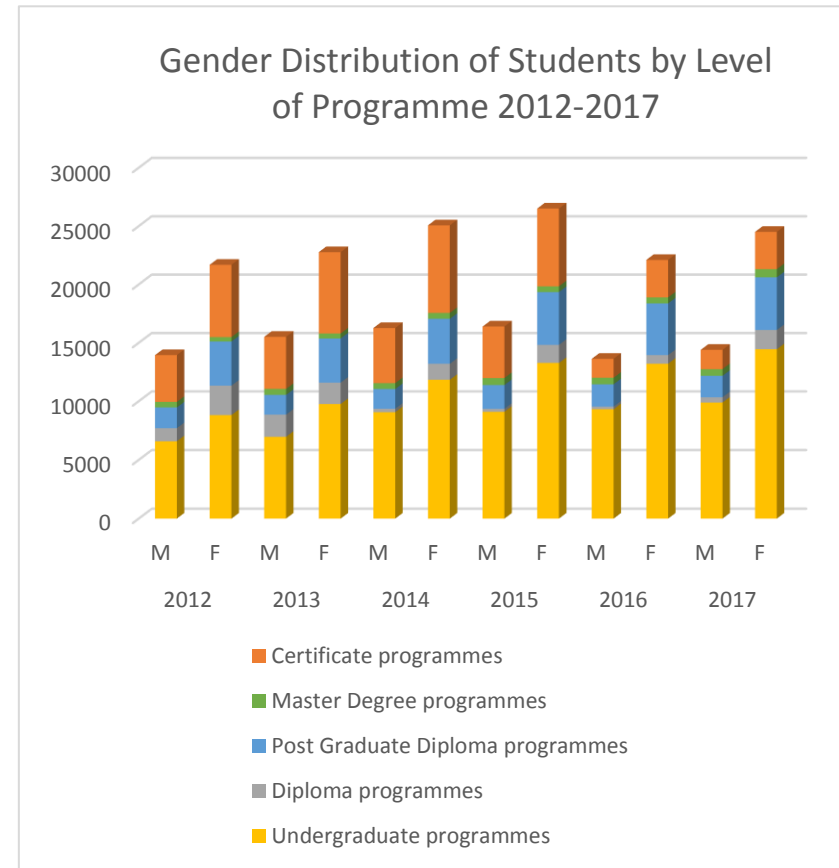


Table 2.1.6 - Student Enrolment by Gender and Faculty

Year	2016		2017	
	Number of Students			
Gender	Female	Total	Female	Total
Faculty of Education	6228	8333	7256	9504
%	74.74	100.00	76.35	100
Faculty of Engineering Technology	1828	5247	2131	5942
%	34.84	100.00	35.86	100
Faculty of Humanities and Social Sciences	8079	14351	8996	15445
%	56.30	100.00	58.25	100
Faculty of Natural Sciences	2969	4473	2996	4408
%	66.38	100.00	67.97	100
Faculty of Health Sciences	3074	3570	3177	3689
%	86.11	100.00	86.12	100
Common to all Faculties	1907	4223	170	393
%	45.16	100.00	43.26	100
Total	24085	40197	24726	39381
%	59.92	100.00	62.79	100.00

Table 2.1.7 - Student Enrolment by Gender and Programme of Study Undergraduate Programmes

Year	2016		2017	
	Number of Students			
	F	T	F	T
Bachelor of Education	16	28	12	17
Bachelor of Education (Drama & Theatre)	30	48	47	71
Bachelor of Special Needs Education	138	148	193	205
Bachelor of Technology	974	3616	1167	4257
Bachelor of Industrial Studies	694	1087	773	1151
Bachelor of Software Engineering	37	131	36	123
Bachelor of Laws	1865	4598	1996	4742
Bachelor of Arts in Social Sciences	1583	2104	1882	2433
Bachelor of Arts in English & English Language Teaching	356	410	341	403
Bachelor of Management Studies	1698	2807	2041	3261
Bachelor of Science	2559	3731	2791	3994
Bachelor of Science(Old)	193	265	0	0
Bachelor of Science Special Degree	03	04	7	8
Bachelor of Science in Nursing	2861	3126	2913	3168
Bachelor of Medical Laboratory Sciences	113	236	131	256
Bachelor of Pharmacy	100	207	133	265
Total	13220	22546	14463	24354
%	58.64	100.00	59.38	100.00

F = Female T = Total

Table 2.1.8 - Student Enrolment by Gender and Programme of Study Master's Degree Programmes

Year	2016		2017	
	Number of Students			
	F	T	F	T
Master of Arts in Teacher Education	4	10	-	-
Master of Arts in Teacher Education (International)	47	98	53	105
Master of Education	236	357	198	279
Master of Education (Course Work)			209	316
Master of Technology in Apparel Production and Management	1	1	1	2
Master of Technology in Construction Management	3	13	2	13
Master of Technology in Industrial Engineering	1	16	-	10
MA in Development Studies & Public Policy	25	73	19	62
MBA in Human Resource Management	46	106	61	122
Master of Laws in Criminal Justice Administration	42	101	60	126
Commonwealth Executive MBA-MPA	50	178	39	112
Master of Environmental Studies	58	122	59	124
Master of Science in Medical Entomology and Applied Parasitology	1	3	-	3
Total	514	1078	701	1274
%	47.68	100	55.02	100

Table 2.1.9 - Student Enrolment by Gender and Programme of Study Postgraduate Diploma Programmes

Year	2016		2017	
Title	Number of Students			
	F	T	F	T
PG Diploma in Education	4395	6254	4413	6151
PG Diploma in Special Needs Education	10	14	91	147
PG Diploma in Apparel Production and Management	2	3	4	6
PG Diploma in Construction Management	7	35	4	41
PG Diploma in Industrial Engineering	0	3	0	1
P G Diploma in Environmental Studies	10	21		
Total	4424	6330	4512	6346
%	69.89	100	71.10	100

Table 2.1.10 - Student Enrolment by Gender and Programme of Study Diploma Programmes

Year	2016		2017	
Title	Number of Students			
	F	T	F	T
Diploma in Early Childhood and Primary Education	524	531	1357	1510
Diploma in Information Systems and Technology	31	78	69	207
Diploma in English	26	33	12	16
Diploma in English Language and Literature	84	106	114	145
Diploma in Youth in Development Work	49	160	41	117
Diploma in Laboratory Tech.			25	41
Diploma in Environmental Science			5	14
Diploma in Microbiology	13	18	13	18
Diploma in Nursing	0	1		
Diploma in Natural and Eco Tourism	9	32	9	32
Total	736	959	1645	2100
%	76.75	100	78.33	100

Table 2.1.11 - Student Enrolment by Gender and Programme of Study Certificate Programmes

Year Title	2016		2017	
	Number of Students			
	F	T	F	T
Certificate in Pre-School Education	659	675	531	591
Advanced Certificate in Pre-School Education	162	162	112	112
Teacher Educator as an Educational Technologist	07	08	0	0
Foundation Programme in Technology	18	150	0	0
Certificate in Industrial Studies	60	114	75	131
Certificate Course in Social Sciences	275	490	246	462
Beginners course in Sinhala	44	96	111	199
Certificate in Basic Sinhala	156	267	154	237
Beginners Course in Tamil	244	319	209	291
Basic Course in Tamil	173	211	163	204
Beginners Course in English	0	0	0	0
Certificate in Basic English	05	08	05	08
Certificate in Professional English	08	13	05	08
Certificate in Entrepreneurship & Small Business Management	370	800	707	1277
Advanced Certificate in English	06	12	07	09
Advanced Cert. in English for Business & Professional Communications stage I	347	558	337	555
Advanced Cert. in English for Business & Professional Communications stage II	627	901	446	656
Advanced Certificate in Tourism Operations	0	0	0	0
Foundation Programme in Science	48	72	48	72
Certificate in Applied Electronics	0	09	0	0
Certificate in Wild Life Conservation	02	18	0	0
Certificate in Environmental Science	03	06	0	0
Certificate in Laboratory Technology	29	43	14	20
Advanced Certificate in Laboratory Technology	09	27	1	1
Certificate in Computer Networks & Security	11	64	03	33
Certificate in Professional Computer Applications	20	34	21	45
Stand Alone Course in Engineering	0	0	0	0
Stand Alone Course in Science	01	04	0	03
Foundation in OUSL	805	1986	170	393
Start @ OUSL	1102	2237	0	0
Total	5191	9284	3365	5307
%	55.91	100.00	63.41	100.00

Table 2.1.12 - Student Enrolment by Medium and Level of Programme of Study

Programme of Study	2016				2017			
	Sinhala	Tamil	English	Total	Sinhala	Tamil	English	Total
Master's Degree Programmes	254	154	670	1078	352	236	686	1274
%	23.56	14.29	62.15	100	27.63	18.52	53.85	100
Postgraduate Diploma Programmes	3611	2376	343	6330	3549	2477	320	6346
%	57.04	37.54	5.42	100	55.92	39.03	5.05	100
Undergraduate Programmes	6265	1370	14911	22546	6302	1475	16577	24354
%	27.79	6.08	66.14	100	25.88	6.06	68.06	100
Diploma Programmes	395	97	467	959	1086	97	917	2100
%	41.19	10.11	48.7	100	51.71	4.62	43.67	100
Certificate Programmes	1665	974	2188	4827	2039	876	1924	4839
%	34.5	20.18	45.32	100	42.14	18.10	39.76	100
Other	1917	384	2156	4457	307	84	77	468
%	43.01	8.62	48.37	100	65.60	17.95	16.45	100
<i>Total</i>	14107	5355	20735	40197	13635	5245	20501	39381
%	35.09	13.33	51.58	100.00	34.62	13.32	52.06	100.00

Table 2.1.13 - Student Enrolment by Medium and Faculty

Faculty	2016				2017			
	Sinhala Medium	Tamil Medium	English Medium	Total	Sinhala Medium	Tamil Medium	English Medium	Total
Faculty of Education	4848	2670	815	8333	5558	2849	1097	9504
%	58.18	32.04	9.78	100	58.48	29.98	11.54	100.00
Faculty of Engineering Technology	740	99	4408	5247	452	66	5424	5942
%	14.1	1.89	84.01	100	7.61	1.11	91.28	100.00
Faculty of Humanities and Social Sciences	5592	2010	6749	14351	6373	2022	7050	15445
%	38.97	14.01	47.03	100	41.26	13.09	45.65	100.00
Faculty of Natural Sciences	1187	205	3081	4473	997	228	3183	4408
%	26.54	4.58	68.88	100	22.62	5.17	72.21	100.00
Faculty of Health Sciences	0	0	3570	3570	0	0	3689	3689
%	0	0	100	100	0	0	100	100
Common to all Faculties*	1740	371	2112	4223	255	80	58	393
%	41.2	8.79	50.01	100	64.89	20.36	14.76	100.00
Total	14107	5355	20735	40197	13635	5245	20501	39381
%	35.09	13.32	51.59	100.00	34.62	13.32	52.06	100.00

*Start@OUSL programme and Foundation in OUSL Programme

Table 2.1.14 - Student Enrolment by Medium and Programme of Study Master's Degree Programmes

Programme of Study	2016				2017			
	Number of Students							
	Sinhala	Tamil	English	Total	Sinhala	Tamil	English	Total
Master of Arts in Teacher Education	7	3	-	10	164	76	39	279
Master of Education (Course Work)	-	-	-	-	142	129	45	316
Master of Arts in Teacher Education (International)	50	39	9	98	46	31	28	105
Master of Education	197	122	48	357	-	-		
Master of Technology in Construction Management	-	-	13	13	-	-	13	13
Master of Technology in Industrial Engineering	-	-	16	16	-	-	10	10
Master of Technology in Apparel Production & Management	-	-	1	1	-	-	2	2
MA in Development Studies & Public Policy	-	-	73	73	-	-	62	62
Commonwealth Executive MBA-MPA	-	-	178	178	-	-	112	112
MBA in Human Resource Management	-	-	106	106	-	-	122	122
Master of Laws in Criminal Justice Administration	-	-	101	101	-	-	126	126
Master of Environmental Studies	-	-	122	122	-	-	124	124
Master of Science in Medical Entomology and Applied Parasitology	-	-	3	3	-	-	3	3
Total	254	154	670	1078	352	236	686	1274
%	23.56	14.29	62.15	100	27.63	18.52	53.85	100.00

Table 2.1.15 - Student Enrolment by Medium and Programme of Study Undergraduate Programmes

Programme of Study	2016				2017			
	Number of student							
	Sinhala	Tamil	English	Total	Sinhala	Tamil	English	Total
Bachelor of Education	14	03	11	28	8	01	8	17
Bachelor of Education (Drama and Theatre)	48	-	48	48	71	-	-	71
Bachelor of Special Needs Education	77	01	148	148	114	01	90	205
Bachelor of Technology	457	82	3077	3616	319	61	3877	4257
Bachelor of Industrial Studies	97	08	982	1087	55	5	1091	1151
Bachelor of Software Engineering	-	-	131	131	-	-	123	123
Bachelor of law	3275	723	600	4598	3340	810	592	4742
Bachelor of Arts in Social Science	77	25	2002	2104	53	19	2361	2433
BA in English & English language Teaching	-	-	410	410	-	-	403	403
Bachelor of Management Studies	1098	327	1382	2807	1397	355	1509	3261
Bachelor of Science (new structure)	1075	196	2460	3731	945	223	2826	3994
Bachelor of Science-Education	47	05	213	265	-	-	-	-
Bachelor of Science -Special	-	-	04	04	-	-	8	8
Bachelor of Science in Nursing	-	-	3126	3126	-	-	3168	3168
Bachelor of medical Laboratory Science	-	-	236	236	-	-	256	256
Bachelor of Pharmacy	-	-	207	207	-	-	265	265
Total	6265	1370	14911	22546	6302	1475	16577	24354
%	27.79	6.08	66.13	100.00	25.88	6.06	68.07	100.00

Table 2.1.16 - Student Enrolment by Medium and Programme of Study Postgraduate Diploma Programmes

Programme of Study	2016				2017			
	Number of Students							
	Sinhala	Tamil	English	Total	Sinhala	Tamil	English	Total
PG Diploma in Education	3605	2373	276	6254	3523	2372	256	6151
PG Diploma in Special Needs Education	06	03	05	14	26	105	16	147
PG Diploma in Construction Management	-	-	35	35	-	-	41	41
PG Diploma in Industrial Engineering	-	-	03	03	-	-	1	1
PG Diploma in Environmental Studies	-	-	21	21	-	-	-	-
PG Diploma in Apparel Production & Management	-	-	03	03	-	-	6	6
Total	3611	2376	343	6330	3549	2477	320	6346
%	57.04	37.54	5.42	100.00	55.92	39.03	5.04	100.00

Table 2.1.17 - Student Enrolment by Medium and Programme of Study Diploma Programmes

Programme of Study	2016				2017			
	Number of Students							
	Sinhala	Tamil	English	Total	Sinhala	Tamil	English	Total
Diploma in Early Childhood and Primary Education	335	09	187	531	1018	59	433	1510
Diploma in Industrial Studies	-	-	-	-	-	-	-	-
Diploma in Technology	-	-	-	-	-	-	-	-
Diploma in Information Systems and Technology	01	-	77	78	1	-	206	207
Diploma in English	-	-	33	33	-	-	16	16
Diploma in English Language and Literature	-	-	106	106	-	-	145	145
Diploma in Youth in Development Work	59	88	13	160	67	37	13	117
Diploma in Microbiology	-	-	18	18	-	-	18	18
Diploma in Natural Eco Tourism	-	-	32	32	-	-	32	32
Diploma in Nursing	-	-	01	01	-	-	-	-
Diploma in Laboratory Technology	-	-	-	-	-	1	40	41
Diploma in Environmental Science	-	-	-	-	-	-	14	14
Total	395	97	467	959	1086	97	917	2100
%	41.19	10.11	48.70	100.00	51.71	4.619	43.67	100.00

Table 2.1.18 - Student Enrolment by Medium and Programme of Study Certificate Programmes

Programme of Study	2016				2017			
	Number of Students							
	Sinhala	Tamil	English	Total	Sinhala	Tamil	English	Total
Certificate in Pre-School Education	403	117	155	675	370	65	156	591
Advanced Certificate in Pre-School Education	106	10	46	162	76	10	26	112
Teacher Educator as an Educational Technologist	-	-	08	08	-	-	-	-
Foundation Programme in Technology	122	09	19	150	-	-	-	-
Certificate in Industrial Studies	63	-	51	114	77	-	54	131
Certificate Course in Social Sciences	245	133	112	490	231	127	104	462
Beginners Course in Sinhala	96	-	-	96	199	-	-	199
Certificate in Basic Sinhala	263	04	-	267	235	2	-	237
Beginners Course in Tamil	-	319	-	319	-	291	-	291
Basic course in Tamil	-	211	-	211	-	204	-	204
Beginners Course in English	-	-	-	-	-	-	-	-
Certificate in Basic English	-	-	08	08	-	-	8	8
Certificate in Professional English	-	-	13	13	-	-	8	8
Advanced Certificate in English	-	-	12	12	-	-	9	9
Advanced Cert. in English for Business & Professional Communications stage I	-	-	558	558	-	-	555	555

Programme of Study	2016				2017			
	Number of Students							
	Sinhala	Tamil	English	Total	Sinhala	Tamil	English	Total
Advanced Cert. in English for Business & Professional Communications stage II	-	-	901	901	-	-	656	656
Advanced Certificate in Tourism Operations	-	-	-	-	851	177	249	1277
Certificate in ESBM	479	141	180	800	-	-	-	-
Foundation Programme in Science	52	04	16	72	52	4	16	72
Certificate in Applied Electronics	-	-	09	09	-	-	-	-
Certificate in Computer Networks & Security	-	-	64	64	-	-	33	33
Certificate in Professional Computer Applications	-	-	34	34	-	-	45	45
Certificate in Wild Life Conservation	10	-	08	18	-	-	-	-
Certificate in Environmental Studies	-	-	06	06	-	-	-	-
Certificate in Laboratory Technology	-	-	43	43	-	-	20	20
Advanced Certificate in Laboratory Technology	-	-	27	27	-	-	1	1
Stand Alone Course in Engineering	-	-	-	0	-	-	-	-
Stand Alone Course in Science	03	-	01	04	-	-	3	3
Foundation in OUSL	1381	307	298	1986	255	80	58	393
Start @ OUSL	359	64	1814	2237	-	-	-	-
Total	3582	1358	4344	9284	2346	960	2001	5307
%	38.58	14.63	46.79	100.00	44.21	18.09	37.70	100.00

Chart 2.1.6 - Student Enrolment by Medium and Level of Program – 2017

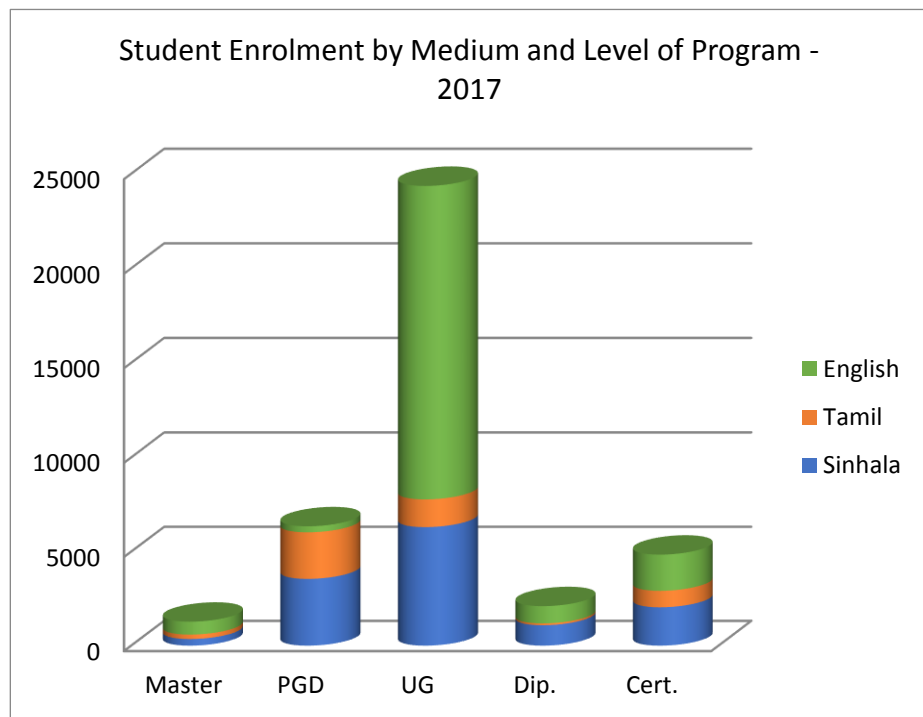


Chart 2.1.7 - Student Enrolment by Medium and Faculty - 2017

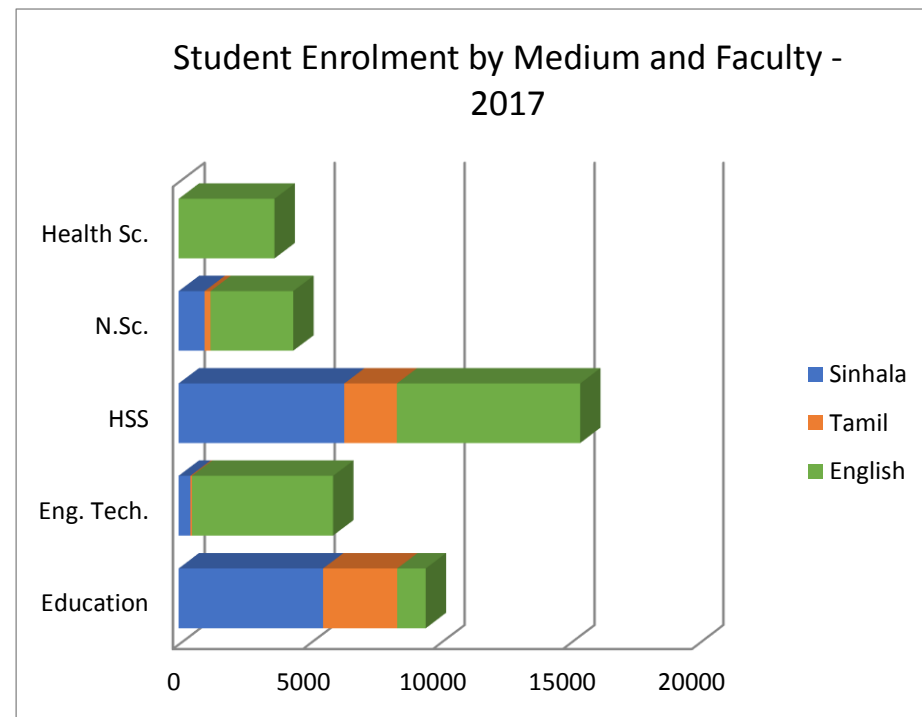


Table 2.1.19 - Student Enrolment by Centre

Centre	Number of Student			
	2016	%	2017	%
Ambalangoda	349	0.87	309	0.78
Ambalantota	344	0.86	323	0.82
Ampara	421	1.05	356	0.90
Anuradhapura	1448	3.60	1391	3.53
Badulla	602	1.50	780	1.98
Bandarawella	367	0.91	380	0.96
Batticaloa	1801	4.48	1719	4.37
Colombo	18731	46.60	18233	46.30
Galle	422	1.05	346	0.88
Gampaha	763	1.91	667	1.69
Hatton	295	0.73	257	0.65
Jaffna	1748	4.35	1675	4.25
Kalutara	445	1.11	425	1.08
Kandy	5976	14.87	6210	15.77
Kegalle	247	0.61	224	0.57
Killinochchi	176	0.44	174	0.44
Kuliyapitiya	13	0.03	6	0.02
Kurunegala	1410	3.51	1445	3.67
Matara	2753	6.85	2601	6.60
Mannar	31	0.08	136	0.35
Monaragalla	105	0.26	99	0.25
Mullativu	52	0.13	62	0.16
Polonnaruwa	233	0.58	208	0.53
Puttalam	262	0.65	205	0.52
Ratnapura	584	1.45	492	1.25
Trincomalee	200	0.50	228	0.58
Vavuniya	418	1.04	429	1.09
Total	40197	100.00	39381	100.00

Table 2.1.20 - Student Enrolment by Province

Province	Number of Students			
	2016	%	2017	%
Western	19940	49.61	19325	49.07
Central	8579	21.34	6467	16.42
Southern	1146	2.85	3580	9.09
Eastern	2422	6.03	2303	5.85
North Western	1685	4.19	1656	4.21
Sabaragamuwa	831	2.07	716	1.82
Northern	2839	7.06	2476	6.29
North Central	1681	4.18	1599	4.06
Uva	1074	2.67	1259	3.20
Total	40197	100.00	39381	100.00

Note: This table has been collated by the enrollment in Centres located in Provinces

Table 2.1.21 - Student Enrolment by Centres and Level of Programme of Study

Centre	Number of Student													
	2016	2017	2016	2017	2016	2017	2016	2017	2016	2017	2016	2017	2016	2017
	Certificate		Diploma		Undergraduate		PG Diploma		Master's		Total		%	%
Ambalangoda	81	51	0		60	49	208	209	0		349	309	0.87	0.78
Ambalantota	141	93	0	10	15	35	187	184	1	1	344	323	0.86	0.82
Ampara	164	110	2	0	23	7	231	237	1	2	421	356	1.05	0.90
Anuradhapura	261	119	20	47	903	979	261	246	3	0	1448	1391	3.60	3.53
Badulla	105	85	1	3	338	507	157	184	1	1	602	780	1.50	1.98
Bandarawella	85	68	0	30	14	6	266	274	2	2	367	380	0.91	0.96
Batticaloa	488	319	46	32	900	1006	356	354	11	8	1801	1719	4.48	4.37
Colombo	3992	2124	734	1431	12158	12744	895	855	952	1079	18731	18233	46.60	46.30
Galle	131	83	0	1	86	64	203	196	2	2	422	346	1.05	0.88
Gampaha	288	204	8	5	118	90	346	365	3	3	763	667	1.90	1.69
Hatton	82	78	0	0	31	51	180	127	2	1	295	257	0.73	0.65
Jaffna	393	178	34	47	934	1061	376	332	11	57	1748	1675	4.35	4.25
Kalutara	135	105	0	0	61	65	243	252	6	3	445	425	1.11	1.08
Kandy	1325	689	55	390	3989	4448	566	603	41	80	5976	6210	14.87	15.77
Kegalle	77	36	0	0	31	19	133	163	6	6	247	224	0.61	0.57
Killinochchi	99	106	1	0	16	15	60	53	0	0	176	174	0.44	0.44
Kuliyapitiya	2	0	0	0	9	4	2	2	0	0	13	6	0.03	0.02
Kurunegala	270	97	19	20	621	840	489	479	11	9	1410	1445	3.51	3.67
Matale	0	0	0	0	445	0	0	0	0	0	445	0	1.11	0.00
Matara	422	133	33	68	1467	2030	369	357	17	14	2308	2602	5.74	6.61
Mannar	31	85	0	0	0	20	0	31	0	0	31	136	0.08	0.35
Monaragalla	95	92	0	0	6	5	3	1	1	1	105	99	0.25	0.25
Mullativu	17	10	0	0	0	0	35	52	0	0	52	62	0.13	0.16
Polonnaruwa	59	57	0	0	6	5	167	145	1	1	233	208	0.58	0.53
Puttalam	123	67	0	0	52	56	87	82	0	0	262	205	0.65	0.52
Ratnapura	199	92	4	14	143	137	232	245	6	4	584	492	1.45	1.52
Trincomalee	55	54	0	0	3	0	142	174	0	0	200	228	0.50	0.58
Vavuniya	163	172	2	2	117	111	136	144	0	0	418	429	1.04	1.09
Total	9284	5307	959	2100	22546	24354	6330	6346	1078	1274	40197	39381	100.00	100

Table 2.1.22 - Student Enrolment by Regional Centres

Location	Number of Students			
	2016	%	2017	%
Anuradhapura	1448	4.18	1391	4.03
Badulla	602	1.74	780	2.26
Batticaloa	1801	5.20	1719	4.98
Colombo	18731	54.12	18233	52.78
Jaffna	1748	5.05	1675	4.85
Kandy	5976	17.27	6210	17.98
Kurunegala	1410	4.07	1445	4.18
Matara	2308	6.67	2602	7.53
Ratnapura	584	1.69	492	1.42
Sub Total	34608		34547	
Other Centres	5589		4834	
% of Other Centres	13.90		12.27	
Total Enrolment	40197		39381	

Table 2.1.23 - Total Student Enrolment in Colombo Regional Centre

Level of Programme	Number of Students			
	2016	%	2017	%
Certificate Programme	3992	21.31	2124	11.65
Diploma Programme	734	3.92	1431	7.85
Undergraduate Programme	12158	64.91	12744	69.90
Post Graduate Diploma Programme	895	4.78	855	4.69
Master's Degree Programme	952	5.08	1079	5.92
Total	18731	100.00	18233	100.00
Total Enrolment	40197		39381	
% of the Total Enrolment	46.60		46.30	

Table 2.1.24 - Total Student Enrolment in Other Centres (Excluding Colombo)

Level of Programme	Number of Students			
	2016	%	2017	%
Certificate Programme	5292	24.65	3183	15.05
Diploma Programme	225	1.05	669	3.16
Undergraduate Programme	10388	48.39	11610	54.90
Post Graduate Diploma Programme	5435	25.32	5491	25.97
Master's Degree Programme	126	0.59	195	0.92
Total	21466	100.00	21148	100.00
Total Enrolment	40197		39381	
% of the Total Enrolment	53.40		53.70	

Chart 2.1.8 - Student Enrolment by Province -2017

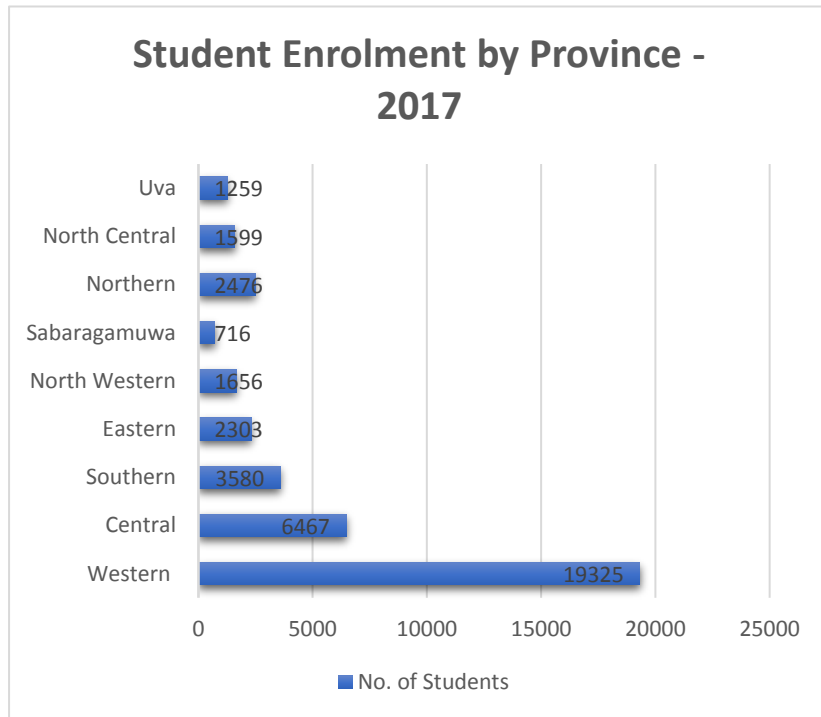
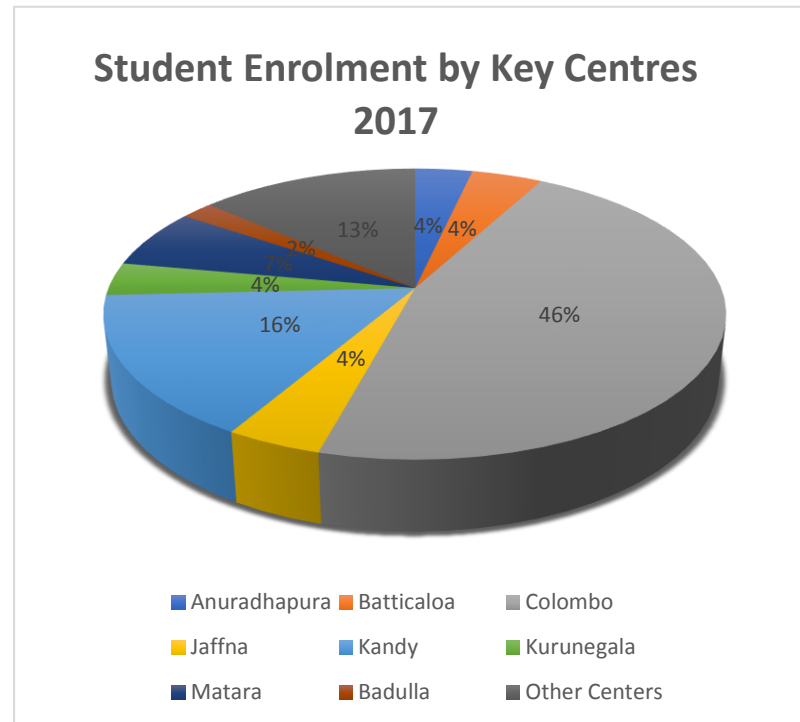


Chart 2.1.9 - Student Enrolment by Key Centres 2017



2.2 New Admissions

Table 2.2.1 - New Admissions by Gender and Level of Programme of Study

Programme of Study	Number of Students									
	2016					2017				
	Male	%	Female	%	Total	Male	%	Female	%	Total
Master's Degree Programmes	186	52.69	167	47.31	353	189	38.89	297	61.11	486
Postgraduate Diploma Programmes	961	30.45	2195	69.55	3156	938	30.27	2161	69.73	3099
Undergraduate Programmes	2110	40.51	3098	59.49	5208	2813	39.30	4345	60.70	7158
Diploma Programmes	149	48.69	157	51.31	306	335	31.31	735	68.69	1070
Certificate Programmes	1111	33.73	2183	66.27	3294	1197	35.75	2151	64.25	3348
Other	1017	60.93	652	39.07	1669	-	-	-	-	-
Total	5534	39.57	8452	60.43	13986	5472	36.09	9689	63.91	15161

Table 2.2.2 - New Admissions by Gender and Faculty

Faculty	Number of Students									
	2016					2017				
	Male	%	Female	%	Total	Male	%	Female	%	Total
Faculty of Education	1044	26.34	2920	73.66	3964	1224	25.82	3517	74.18	4741
Faculty of Engineering Technology	934	63.28	542	36.72	1476	1430	64.41	790	35.59	2220
Faculty of Humanities and Social Sciences	2018	40.26	2994	59.74	5012	1855	37.79	3054	62.21	4909
Faculty of Natural Sciences	419	36.43	731	63.57	1150	104	47.27	116	52.73	220.00
Faculty of Health Sciences	107	14.84	614	85.16	721	118	15.25	656	84.75	774
Non-Faculty	1012	60.85	651	39.15	1663					
<i>Total</i>	5534	39.57	8452	60.43	13986	4731	36.78	8133	63.22	12864

Table 2.2.3 - New Admissions by Gender and Programme of Study - Undergraduate Programmes

Programme of Study	Number of Students					
	2016			2017		
	Male	Female	Total	Male	Female	Total
Bachelor of Education	2	1	3	1		1
Bachelor of Education (Drama & Theatre)	8	10	18	15	19	34
Bachelor of Special Needs Education	4	58	62	4	65	69
Bachelor of Technology	659	219	878	1095	384	1479
Bachelor of Industrial Studies	153	225	378	156	293	449
Bachelor of Software Engineering	30	16	46	28	13	41
Bachelor of Laws	395	270	665	331	368	699
Bachelor of Arts Social Sciences	146	472	618	233	781	1014
BA in English & English Language Teaching	22	180	202	11	80	91
Bachelor of Management Studies	297	405	702	506	687	1193
Bachelor of Science	287	628	915	315	999	1314
Bachelor of Science in Nursing	56	575	631	48	581	629
Bachelor of Medical Laboratory Sciences	28	27	55	22	27	49
Bachelor of Pharmacy	23	12	35	48	48	96
Total	2110	3098	5208	2813	4345	7158
%	40.51	59.49	100.00	39.30	60.70	100.00

Table 2.2.4 - New Admissions by Gender and Programme of Study - Postgraduate Diploma Programmes

Programme of Study	Number of Students					
	2016			2017		
	Male	Female	Total	Male	Female	Total
PG Diploma in Education	946	2181	3127	914	2138	3052
PG Diploma in Special Needs Education	4	10	14	6	20	26
PG Diploma in Apparel Production and Management	-	-	-	1	2	3
PG Diploma in Construction Management	11	4	15	17	1	18
Total	961	2195	3156	938	2161	3099
%	30.45	69.55	100.00	30.27	69.73	100.00

Table 2.2.5 - New Admissions by Gender and Programme of Study - Master's Degree Programmes

Programme of Study	Number of Students					
	2016			2017		
	Male	Female	Total	Male	Female	Total
Master of Arts in Teacher Education (International)	36	35	71	21	19	40
Master of Education	30	60	90	0	0	0
Master of Education (course work)				104	212	316
Master of Construction Management				2	0	0
MBA in Human Resource Management	25	21	46	17	21	38
Commonwealth Executive MBA/MPA	42	13	55	0	0	0
Master of Laws in Criminal Justice Administration	34	16	50	23	25	48
Master of Environmental Studies	19	22	41	22	20	48
Total	186	167	353	189	297	490
%	52.69	47.31	100.00	38.89	61.11	100.00

Table 2.2.6 - New Admissions by Gender and Programme of Study - Diploma Programmes

Programme of Study	Number of Students					
	2016			2017		
	Male	Female	Total	Male	Female	Total
Diploma in Early Childhood and Primary Education	-	-	-	142	560	702
Diploma in Information Systems and Technology	38	26	64	111	52	163
Diploma in English Language and Literature	22	84	106	16	40	56
Diploma in Youth in Development Work	61	25	86	29	15	44
Diploma in Environmental Sciences				9	5	14
Diploma in Micro Biology	5	13	18	5	13	18
Diploma in Laboratory Tech				14	27	41
Diploma in Natural Resources and Eco Tourism	23	9	32	9	23	32
Total	149	157	306	335	735	1070
%	48.69	51.31	100.00	31.31	68.69	100.00

Table 2.2.7 - New Admissions by Gender and Programme of Study Certificate Programmes

Programme of Study	Number of Students					
	2016			2017		
	Male	Female	Total	Male	Female	Total
Certificate in Pre-School Education	14	489	503	18	433	451
Advanced Certificate in Pre-School Education	-	76	76	0	44	44
Foundation Programme in Technology	2	-	2	-	-	-
Certificate in Industrial Studies	41	52	93	41	56	97
Certificate in Social Sciences	112	139	251	111	102	213
Beginners Course in Basic Sinhala	49	44	93	84	111	195
Certificate in Basic Sinhala	47	89	136	38	57	95
Beginners Course in Tamil	72	233	305	77	201	278
Certificate Course in Tamil	10	62	72	12	31	43
Advanced Certificate in English for Business & professional communication stage I	189	298	487	196	287	483
Advanced Certificate in English for Business & professional communication stage II	188	379	567	133	262	395
Certificate in Entrepreneurship & Small Business Management	307	264	571	428	531	959
Certificate in Computer Networks security	49	11	60	27	3	30
Cert.in Professional computer Applications	10	17	27	24	21	45
Certificate in Laboratory Technology	10	25	35	5	12	17
Advanced Certificate in Laboratory Technology	13	5	18	0	0	0
Stand Alone Course in Science	3	1	4	3	0	0
Foundation in OUSL	1012	651	1663	0	0	0
Total	2128	2835	4963	1197	2151	3345
%	42.88	57.12	100.00	35.75	64.25	100.00

2.3. Registration of Students

Table 2.3.1. - Registration of Students by Level of Programme of Study – 2016-2017

Programme of Study	Number New Registered		%		Number Re-registered		%		Total	
	2016	2017	2016	2017	2016	2017	2016	2017	2016	2017
Undergraduate Programmes	5208	7158	37.24	47.21	17338	17196	66.15	71.00	22546	24354
Post Graduate Diploma Programmes	3156	3099	22.57	20.44	3174	3247	12.10	13.41	6330	6346
Master's Degree Programmes	353	486	2.52	3.21	725	788	2.78	3.25	1078	1274
Diploma Programmes	306	1070	2.19	7.06	653	1030	2.49	4.25	959	2100
Certificate Programmes	3294	3348	23.55	22.08	1533	1494	5.84	6.17	4827	4842
Foundation	1669		11.93	0.00	2788	465	10.64	1.92	4457	465
Total	13986	15161	100.00	100.00	26211	24220	100.00	100.00	40197	39381
%	34.79		-		65.21		-		100.00	

Table 2.3.2 - Registration of Students by Faculty

Year	2016		2017	
Faculty	NR	TE	NR	TE
Faculty of Education	3964	8333	2252	5942
Faculty of Engineering Technology	1476	5247	4735	9504
Faculty of Humanities and Social Sciences	5012	14351	5844	15445
Faculty of Natural Sciences	1150	4473	1556	4408
Faculty of Health Sciences	721	3570	774	3689
OUSL	1663	4223	393	393
Total	13986	40197	15554	39381
%	34.79	100.00	39.49	100.00

NR = New Registration TE = Total Enrolment

Table 2.3.3 - Student on Roll and New Registration in Popular Courses - (2016- 2017)

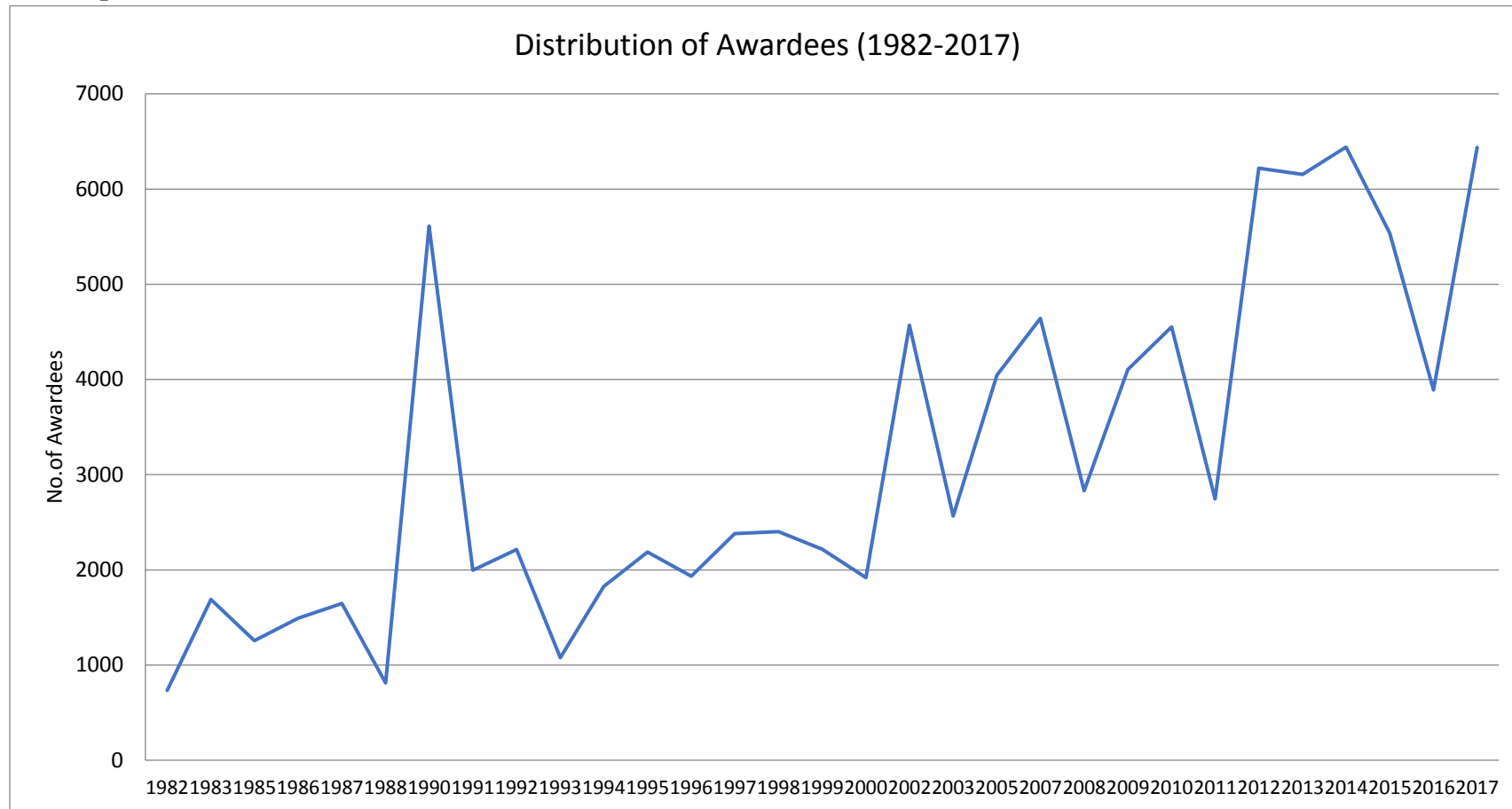
Level of Programmes	Degree Area	2013		2014		2015		2016		2017	
		On Roll	New Reg.	On Roll	New Reg.	On Roll	New Reg.	On Roll	New Reg.	On Roll	New Reg.
Undergraduate Programmes	Technology	1540	487	3750	1042	3556	904	3616	878	4257	1479
	Industrial Studies	422	162	956	310	1053	374	1087	378	1151	449
	Law	3960	992	4236	998	4456	1146	4598	665	4742	699
	Social Sciences	1433	553	1841	763	1987	630	2104	618	2433	1014
	Management	2262	880	2607	1038	2850	979	2807	702	3261	1193
	Science	4459	1408	4065	995	4261	919	4000	915	4002	1314
	Nursing	2107	591	2567	717	3108	851	3126	631	3168	629
Postgraduate Diploma Programmes	Education	5314	2298	5412	2766	6181	3088	6254	3127	6151	3052
	Special Needs Education	48	48	52	52	321	105	14	14	147	26
Diploma Programmes	Early childhood and primary Education	780	407	1123	555	1264	438	531	-	1510	702
Certificate Programmes	Pre-School Education	1652	711	1448	681	1260	589	675	503	591	451
	Basic English	1854	1174	1617	1177	160	-	-	-	0	0
	Advanced Cert. in English for Business & professional communication	-	-	-	-	1451	1184	1459	1054	1211	878
	Entrepreneurship & Small Business Management	911	575	1100	723	1146	720	800	571	1277	959
Total		27426	10220	28808	10929	28979	9832	7729	4201	33901	12845

Chapter 03

Registrations & Output

Chapter 03

3.1 Output – Distribution of Awardees



3.2 Output

Table 3.2.1 - MPhil and PhD Degree Student Output

Faculty		2013	2014	2015	2016	2017	Total
		Number of Recipients					
Faculty of Education	M Phil	01	-	-	-	-	01
	Ph.D	01	-	-	-	-	01
Faculty of Engineering Technology	M Phil	-	01	-	-	03	04
	Ph.D	-	-	-	-	-	-
Faculty of Humanities and Social Sciences	M Phil	-	-	-	-	-	-
	Ph.D	-	-	-	-	-	-
Faculty of Natural Science	M Phil	02	02	01	01	-	06
	Ph.D	-	-	01	01	02	04
Faculty of Health Science	M Phil	-	-	-	-	-	-
	Ph.D	-	-	-	-	-	-
Total	M Phil	03	03	01	01	03	11
	Ph.D	01	-	01	01	02	05

Table 3.2.2 - Master's Degree Student Output

Programme	2016		2017	
	Number of Recipients (percentage)			
	F	T	F	T
Master of Arts in Teacher Education	07	32	02	06
	21.88	100.00	33.33	100.00
Master of Arts in Teacher Education (International)	10	31	03	03
	32.26	100.00	100.00	100.00
Master of Education	03	06	06	08
	50.00	100.00	75.00	100.00
Master of Technology	04	08	-	-
	42.86	100.00	-	-
Master of Arts in Development Studies & Public Policy	01	08	03	05
	12.50	100.00	60.00	100.00
MBA in Human Resource Management	05	07	13	28
	71.43	100.00	46.43	100.00
Commonwealth Executive MBA/ MPA	10	38	13	52
	26.32	100.00	25.00	100.00
Master of Laws in Criminal Justice Administration	-	-	05	09
	-	-	55.56	100.00
Master of Science in Environmental Studies	05	12	12	23
	41.67	100.00	52.17	100.00
Master of Science in Medical Entomology & Applied Parasitology	-	-	04	06
	-	-	66.67	100.00
Total	45	142	61	144
	31.69	100.00	42.36	100.00

F = Female, T = Total

Table 3.2.3 - Postgraduate Diploma Student Output

Programme	2016		2017	
	Number of Recipients (percentage)			
	F	T	F	T
PGD in Education	-	-	1744	2495
	-	-	69.90	100.00
PGD in Special Needs Education	48	87	47	102
	55.17	100.00	46.08	100.00
PGD in Technology	06	15	01	10
	40.00	100.00	10.00	100.00
PGD in Human Resource Management	08	20	08	14
	40.00	100.00	57.14	100.00
PGD in Development Studies & Public Policy	-	-	06	12
	-	-	50.00	100.00
PGD in Business Administration(CEMBA)			0	02
			0.0	100.00
PGD in Environmental Studies	-	-	01	01
	-	-	100.00	100.00
Total	62	122	1807	2636
	50.82	100.00	68.55	100.00

F = Female, T = Total

Table 3.2.4 - Graduate Output – bachelor’s Degree Programmes

Programme	2016		2017	
	Number of Recipients (percentage)			
	F	T	F	T
Bachelor of Technology	30	99	22	78
	30.30	100.00	28.21	100.00
Bachelor of Industrial Studies	20	25	39	52
	80.00	100.00	75.00	100.00
Bachelor of Software Engineering	01	07	09	21
	14.29	100.00	42.86	100.00
Bachelor of Laws	-	-	128	266
	-	-	48.12	100.00
Bachelor of Arts in Social Science	160	242	243	317
	66.11	100.00	76.66	100.00
BA in English & English Language Teaching	17	18	24	28
	94.44	100.00	85.71	100.00
Bachelor of Management Studies	52	88	77	112
	59.09	100.00	68.75	100.00
Bachelor of Science	253	322	409	511
	78.57	100.00	80.04	100.00
Bachelor of Science(Special)			02	03
			66.67	100.00
Bachelor of Science in Nursing	163	182	237	263
	89.56	100.00	90.11	100.00
Bachelor of Education	01	04	03	06
	25.00	100.00	50.00	100.00
Bachelor of Education in Drama & Theatre Arts	27	45	08	16
	60.00	100.00	50.00	100.00
<i>Total</i>	724	1032	1201	1673
	70.15	100.00	71.79	100.00

F = Female, T = Total

Table 3.2.5 - Diploma Student Output

Programme	2016		2017	
	Number of Recipients (percentage)			
	F	T	F	T
Diploma in Early Childhood and Primary Education	334	335	275	280
	99.70	100.00	98.21	100.00
Diploma in Industrial Studies	30	36	21	31
	83.33	100.00	67.74	100.00
Diploma in Technology	09	53	19	66
	16.98	100.00	28.79	100.00
Diploma in Information Systems and Technology	01	01	03	04
	100.00	100.00	75.00	100.00
Diploma in Youth in Development Work	16	32	07	17
	50.00	100.00	41.18	100.00
Diploma in English	37	49	10	12
	75.51	100.00	83.33	100.00
Diploma in English Language and Literature	-	-	18	24
	-	-	75.00	100.00
Diploma in Management	92	153	157	222
	60.13	100.00	70.72	100.00
Diploma in Microbiology	07	16	-	-
	43.75	100.00	-	-
Diploma in Science	-	-	48	67
	-	-	71.64	100.00
Total	526	675	558	723
	77.93	100.00	77.18	100.00

F = Female, T = Total

Table 3.2.6 - Output by Certificate Level

Programme	Year	2016		2017	
		Number of Recipients (percentage)			
		F	T	F	T
Certificate in Pre-School Education	452	452	314	316	
	100.00	100.00	99.37	100.00	
Advanced Certificate in Pre-School Education	67	67	84	84	
	100.00	100.00	100.00	100.00	
Certificate in Industrial Studies/Environmental Hazards	28	41	19	30	
	68.29	100.00	63.33	100.00	
Certificate in Social Sciences	65	114	75	116	
	57.02	100.00	64.66	100.00	
Beginners Course in Tamil	83	105	-	-	
	79.05	100.00	-	-	
Basic Course in Tamil	-	-	01	01	
	-	-	100.00	100.00	
Certificate in Basic Sinhala	101	185	-	-	
	54.59	100.00	-	-	
Certificate in Basic English	17	21	03	03	
	80.95	100.00	100.00	100.00	
Certificate in Professional English	14	19	02	04	
	73.68	100.00	50.00	100.00	
Advanced Certificate in English	11	16	01	04	
	68.75	100.00	25.00	100.00	
Advanced Cert. in English for Business & Professional Communications stage I	125	184	-	-	
	67.93	100.00	-	-	
Advanced Cert. in English for Business & Professional Communications stage II	210	252	311	429	
Sub Total	83.33	100.00	72.49	100.00	
	1173	1456	810	987	

F = Female, T = Total

Table 3.1.6 (contd.) Output by Certificate Level

Programme	Year	2016		2017	
	Number of Recipients (percentage)				
	F	T	F	T	
Advanced Certificate in Tourism Operation	02	03	-	-	
	66.67	100.00	-	-	
Certificate in Entrepreneurship & Small Business Management	157	234	95	153	
	80.95	100.00	62.09	100.00	
Certificate in Applied Electronics	-	-	-	-	
	-	-	-	-	
Certificate in Professional Computer Applications	34	54	35	51	
	62.96	100.00	68.63	100.00	
Certificate in Computer Networks & Security	03	41	08	31	
	7.32	100.00	25.81	100.00	
Certificate in Wild Life Conservation	6	21	-	-	
	28.57	100.00	-	-	
Certificate in Laboratory Technology	14	18	15	23	
	77.78	100.00	65.22	100.00	
Advanced Certificate in Laboratory Technology	-	01	04	16	
		100.00	25.00	100.00	
Foundation Certificate in Science	74	89	-	-	
	83.15	100.00	-	-	
Sub Total	290	461	157	274	
Grand Total	1463	1917	967	1261	
	76.32	100.00	76.69	100.00	

Note: Excludes the Programmes of Certificate in English for Legal Studies and Certificate in English for Management Studies

Table 3.2.7 - Total Output by Faculty

Faculty	2016	%	2017	%
	Number of Recipients			
Faculty of Education	1059	27.22	3316	51.51
Faculty of Engineering Technology	285	7.33	296	4.60
Faculty of Humanities and Social Sciences	1788	45.96	1830	28.43
Faculty of Natural Sciences	576	14.81	732	11.37
Faculty of Health Sciences	182	4.68	263	4.09
Total	3890	100.00	6437	100.00

Table 3.2.8 - Total Output by Level of Programme of Study

Level of Programmes	2016	%	2017	%
	Number of Recipients			
Ph. D	01	0.03	02	0.03
M Phil	01	0.03	03	0.05
Master's Degree	142	3.65	144	2.24
Postgraduate Diploma	122	3.14	2636	40.92
Bachelor's Degree	1032	26.53	1673	25.97
Diploma	675	17.35	723	11.22
Certificate Programmes	1917	49.28	1261	19.57
Total	3890	100.00	6442	100.00

Table 3.2.9 - Distribution of Output by Faculty - 2017

Level /Faculty	Education	HSS	Natural Science	Engineering	Health Science	Total
Bachelor's Degree and Above						
PhD	-	-	02	-	-	02
M. Phil	-	-	-	03	-	03
Master's Degree	17	94	29	04	-	144
Postgraduate Diploma	2597	28	01	10	-	2636
Bachelor's Degree	22	723	514	151	263	1673
<i>Sub Total</i>	2636	845	544	165	263	4458
Diploma Level and Below						
Diploma	280	275	67	101	-	723
Certificate	400	710	121	30	-	1261
<i>Sub Total</i>	680	985	188	131	-	1984
<i>Grand Total</i>	3316	1830	732	296	263	6442

Chart 3.2.1 - Distribution of Awards by Faculty - 2017

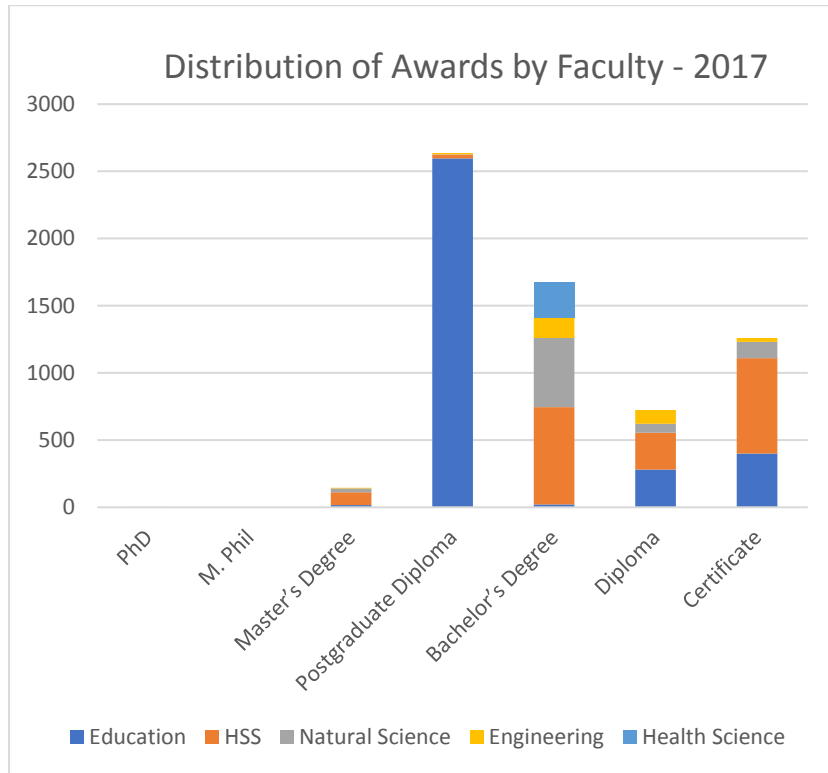


Chart 3.2.1 - Distribution of Awards by Centres - 2017

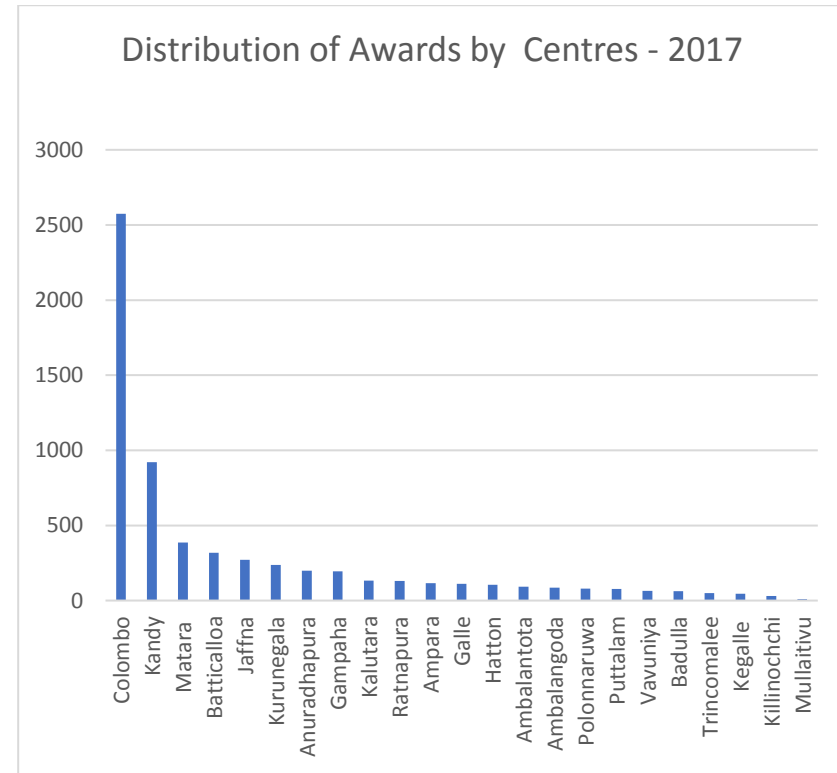


Table 3.2.10 - Output by Centres

Centre	Number of Recipients											
	Master's Degree		PG Diploma		Bachelor's Degree		Diploma		Certificates		Total	
	2016	2017	2016	2017	2016	2017	2016	2017	2016	2017	2016	2017
Colombo	131	138	47	390	670	1015	419	436	851	596	2118	2575
Kaluthara	0	0	0	93	4	8	0	1	34	31	38	133
Kuliyapitiya	0	0	0	0	0	1	0	0	0	0	0	1
Ratnapura	0	0	0	92	6	9	6	7	23	23	35	131
Puttalam	0	0	0	40	0	1	1	6	41	30	42	77
Gampaha	0	0	0	132	3	4	3	5	74	54	80	195
Jaffna	0	1	7	187	27	30	7	14	84	40	125	272
Vavuniya	0	0	0	57	6	0	0	3	20	5	26	65
Killinochchi	0	0	0	21	0	0	0	1	14	8	14	30
Trincomalee	0	0	0	45	0	0	0	0	13	4	13	49
Kandy	0	3	4	215	169	332	168	163	345	207	686	920
Matale	1	0	0	0	0	0	0	1	0	0	0	1
Batticalloa	5	1	44	214	41	33	8	08	72	62	170	318
Ampara	0	0	7	100	0	0	1	0	66	16	74	116
Kurunegala	1	0	0	183	8	19	5	6	39	24	53	237
Anuradhapura	0	0	0	123	17	40	16	13	34	17	67	198
Bandarawela	0	0	4	212	3	04	0	0	36	19	43	135
Badulla	0	0	0	52	0	0	0	0	0	11	0	63
Hatton	0	0	9	77	7	03	0	0	18	26	34	106
Kegalle	0	0	0	32	0	4	1	0	6	9	7	45
Polonnaruwa	0	0	0	73	0	0	0	0	3	7	3	80
Galle	4	0	0	79	0	9	5	7	36	17	45	112
Ambalangoda	0	0	0	71	4	5	2	3	12		18	85
Matara	0	1	0	149	0	156	31	48	58	32	89	386
Ambalantota	0	0	0	78	0	0	0	01	18	13	18	92
Monaragala	0	0	0	1	0	0	2	0	18	3	20	4
Mullaitivu	0	0	0	10	0	0	0	0	2	0	2	10
Total	142	144	122	2636	1032	1673	675	723	1917	1261	3888	6437

Note: Excludes 03 MPhil and 2 PhD Degrees

3.3 Award of Classes

Table 3.3.1 - Bachelor's Degrees

Degree Programme	2016					2017				
	First Classes	Second Classes		Passes	Total	First Classes	Second Classes		Passes	Total
		Upper	Lower				Upper	Lower		
Bachelor of Education (Natural Sciences)	-	-	-	04	04	-	-	-	06	06
Bachelor of Education (Drama & Theatre)	03	08	20	14	45	-	03	05	08	16
Bachelor of Technology	01	09	11	78	99	02	09	11	56	78
Bachelor of Industrial Studies	02	04	02	17	25	09	11	09	23	52
Bachelor of Software Engineering	-	-	-	07	07	-	04	05	12	21
Bachelor of Laws	-	-	-	-	-	-	03	12	251	266
Bachelor of Management Studies	-	03	14	71	88	02	06	16	88	112
Bachelor of Arts in Social Science	01	17	48	176	242	02	22	78	215	317
Bachelor of English & English Language Teaching	01	04	09	04	18	-	04	08	16	28
Bachelor of Science	04	16	34	268	322	06	27	33	445	511
Bachelor of Science (Special)	-	-	-	-	-	-	-	-	03	03
Bachelor of Science in Nursing	-	13	32	137	182	02	46	21	194	263
Total	12	74	169	776	1032	23	135	198	1317	1673

Table 3.3.2 - Postgraduate Diplomas

Postgraduate Diploma Programme	2016				2017			
	Distinction	Merit Pass	Pass	Total	Distinction	Merit Pass	Pass	Total
Post Graduate Diploma in Special Needs Education (PGDSNE)	-	-	87	87	-	-	102	102
Post Graduate Diploma in Education (PGDE)	-	-	0	0	03	104	2388	2495
Post Graduate Diploma in Construction Management	-	-	14	14	-	-	06	06
Post Graduate Diploma in Industrial Engineering	-	-	0	0	-	-	02	02
Post Graduate Diploma in Apparel Production and Management	-	-	01	01	-	-	02	02
Post Graduate Diploma in Development Studies & Public Policy	-	-	0	0	-	-	12	12
Post Graduate Diploma in Human Resource Management	-	-	20	20	-	-	14	14
PG Diploma in Business Administration	-	-			-	-	02	02
Post Graduate Diploma in Environmental Science	-	-	0	0	-	-	01	01
Total	-	-	122	122	03	104	2529	2636

3.4 Enrolment in Short Courses and Awards

Table 3.4.1 - Short Course in Computer Literacy (2016-2017)

Centre	2016		2017	
	Number of Students Enrolled	Number Successfully Completed	Number of Students Enrolled	Number Successfully Completed
Ambalangoda	196	101	231	133
Ambalantota	187	139	231	175
Anuradhapura	224	206	387	158
Badulla	157	36	167	101
Bandarawela	127	51	196	89
Batticaloa	23	0	28	16
Colombo	154	28	95	90
Galle	335	144	372	196
Gampaha	98	76	287	100
Kalutara	274	137	321	212
Kandy	653	182	372	264
Kegalle	165	200	212	97
Kurunegala	270	161	121	295
Matara	342	53	402	113
Polonnaruwa	237	105	210	150
Puttalam	56	25	39	27
Ratnapura	330	95	343	180
Hatton	-	-	77	70
Total	3828	1769	4091	2456
%	100.00	46.21	100	60.03

Table 3.4.2 - Short Course in Speech and Listening (English) (2016 - 2017)

Centre	2016		2017	
	Number of Students Enrolled	Number Successfully Completed	Number of Students Enrolled	Number Successfully Completed
Ambalantota	128	78	107	81
Bandarawela	96	67	129	111
Badulla	92	63	61	55
Gampaha	-	-	151	108
Gall	-	-	80	62
Jaffna	56	42	-	-
Hatton	54	33	-	-
Kegalle	40	39	53	-
Kilinochchi	27	21	42	39
Monaragala	17	09	-	-
Polonnaruwa	146	101	-	-
Puttalam	96	87	158	138
Total	574	391	728	594
%		68.11		81.60

Table 3.4.3 - Short Course in Teaching Children with Learning Disabilities (2016-2017)

Centre	2016		2017	
	Number of Students Enrolled	Number Successfully Completed	Number of Students Enrolled	Number Successfully Completed
Colombo	86	86	64	64
%		100.00		100.00

Table 3.4.4- Short Course in Multi Grade Teaching (2016-2017)

Centre	2016		2017	
	Number of Students Enrolled	Number Successfully Completed	Number of Students Enrolled	Number Successfully Completed
Anuradhapura	18	18	27	24
%		100.00		88.88

Table 3.4.5 - Short Courses Conducted by the Faculty of Natural Sciences - (2016-2017)

Title	2016		2017	
	Number of Students Enrolled	Number Successfully Completed	Number of Students Enrolled	Number Successfully Completed
Short Course in Plant Breeding Techniques	20	20	20	20
Short Course in Professional Computer Applications for SPC	98	51	108	66
Certificate in Computer Networks & Security	60	30	74	59
Professional Web Development Using Joomla And WordPress	66	59	41	41
<i>Total</i>	<i>140</i>	<i>117</i>	<i>243</i>	<i>186</i>
%		<i>83.57</i>		<i>76.54</i>

Table 3.4.6 - Short Course in Tourism & Hotel Operation (2016-2017)

	2016		2017	
	Number of Students Enrolled	Number Successfully Completed	Number of Students Enrolled	Number Successfully Completed
Colombo	85	39	198	112
Kandy	19	07	50	29
Kilinochchi	21	21	14	14
Mullaithivu	12	12	-	-
Total	137	79	262	155
%	100	57.66	100	59.16

Table 3.4.7 - Short Course in Human Resource Management (2016-2017)

	2016		2017	
	Number of Students Enrolled	Number Successfully Completed	Number of Students Enrolled	Number Successfully Completed
Ambalantota	44	38	65	48
Badulla	36	34	95	71
Bandarawela	07	07	-	-
Colombo	52	48	122	53
Gampaha	-	-	78	-
Hatton	-	-	12	12
Kilinochchi	-	-	20	16
Monaragala	50	49	34	30
Puttalam	-	-	15	13
Ratnapura	19	16	40	31
Trincomalee	-	-	17	14
Total	208	192	498	288
%		92.3		57.8

Table 3.4.8- Summary - Enrolment in Short Courses and Awards

Title	2016		2017	
	Number of Students Enrolled	Number Successfully Completed	Number of Students Enrolled	Number Successfully Completed
Short Course in Computer Literacy	3828	1769	4091	2456
Short Course in Human Resource Management	208	192	498	288
Short Course in Tourism & Hotel Operation	137	79	262	155
Short Course in Listening & Speech	574	391	728	594
Short Course in Spoken & Written Korean	52	35	0	0
Short Course in Teaching Children with Learning Disabilities	86	86	64	64
Short Course in Multi Grade Teaching	18	18	27	24
Short Course an Research Methodology	32	28	25	23
Short Course in Professional Computer Applications	98	51	108	66
Certificate in Computer Networks & Security	60	30	74	59
Professional web development using Joomla and Wordpress	66	59	41	41
Short Course in Plant Breeding Techniques	20	20	20	20
Total	5179	2758	5938	3790
%		53.25		63.83

Table 3.4.9 - New Short Courses conducted in 2017

Title	Centre	Number of Participants	Number Successfully Completed
Connect to Learn Computer Literacy Programme (Collaboration with COL, Ericsson and Mobitel)	Badulla	40	23
Short Course in Speech & Listening	Gampaha	151	108
Short Course in Human Resource Management		78	0
Short Course in Computer Aided Drafting & Modeling		17	0
Short Course in Listening and Speech	Galle	80	62
Certificate in Computerized Accounting Package		10	10
Total		376	203

Table 3.4.10 – Summary- Enrolment in Short Courses and Awards in centers

Title	Centre	2016		2017	
		Number of Students Enrolled	Number Successfully Completed	Number of Students Enrolled	Number Successfully Completed
Short Course in Human Resource Management	Colombo	52	45	122	53
	Gampaha	0	0	78	0
	Puttalam	-	-	15	13
	Bandarawala	07	07	-	
	Hatton	-	-	12	12
	Monaragala	50	49	34	30
	Badulla	36	34	95	71
	Ambalantota	44	38	65	48
	Trincomallee	-	-	17	14
	Rathnapura	19	16	40	31
Short Course in Marketing Management	Colombo	-	-	43	28
Short Course in Listening and Speech	Puttalam	96	87	158	138
	Gampaha	0	0	151	108
	Bandarawala	96	67	129	111
	Hatton	51	51	-	-
	Badulla	92	63	61	55
	Ambalantota	128	78	107	81
	Galle	-	-	80	62
Short Course in Computer Aided Drafting & Modeling	Gampaha	0	0	17	0
	Rathnapura	44	41	20	20
	Galle	28	28	29	29
Short Course in Advanced Office Package & Database Management	Gampaha	62	55	64	17
Short Course in Dynamic Graphic Designing	Gampaha	27	27	19	9
	Badulla	-	-	14	12
Short Course in Database & Network Design Management	Gampaha	22	22	16	0
Certificate in Completion of Computer Literacy	Batticaloa	36	25	28	16
	Badulla	207	43	166	92
Short Course in Office Application	Monaragala	60	58	60	57
Certificate in Dynamic Web Designing Programme	Galle	11	11	-	-
Certificate in Computerized Accounting Package	Galle	-	-	10	10

Chapter 04

Employment Statistics

Chapter 04

4.1 Employee Statistics

Table 4.1.1 - Total Number of Employees – 2017

Staff Category	Status	ET	Edu.	HSS	NS	HS	Lib.	RES	CETMe	Admin.	Total
Academic Staff	P	85	39	68	87	13	09	07	05	00	313
	T	13	-	07	08	-	-	-	-	-	28
Academic Support Staff	P	03	-	01	-	-	-	08	-	-	12
	T	28	04	-	58	04	-	24	-	-	118
Visiting Staff	-	98	256	912	135	26	-	04	-	-	1431
<i>Sub Total</i>	-	227	299	988	288	43	09	43	05	00	1902
Administrative Staff	P	05	01	01	01	01	-	24	11	30	74
	T	-	-	-	-	-	-	-	-	05	05
Non Academic Staff	P	75	22	26	47	09	29	102	07	308	625
	T	-	-	-	-	-	-	-	-	52	52
<i>Sub Total</i>		80	23	27	48	10	29	126	18	395	756
Grand Total		307	322	1015	336	53	38	169	23	395	2658

P = Permanent **T** = Temporary

ET – Engineering Technology

Edu. – Education

HSS – Humanities and Social Sciences

NS – Natural Sciences

HS – Health Sciences

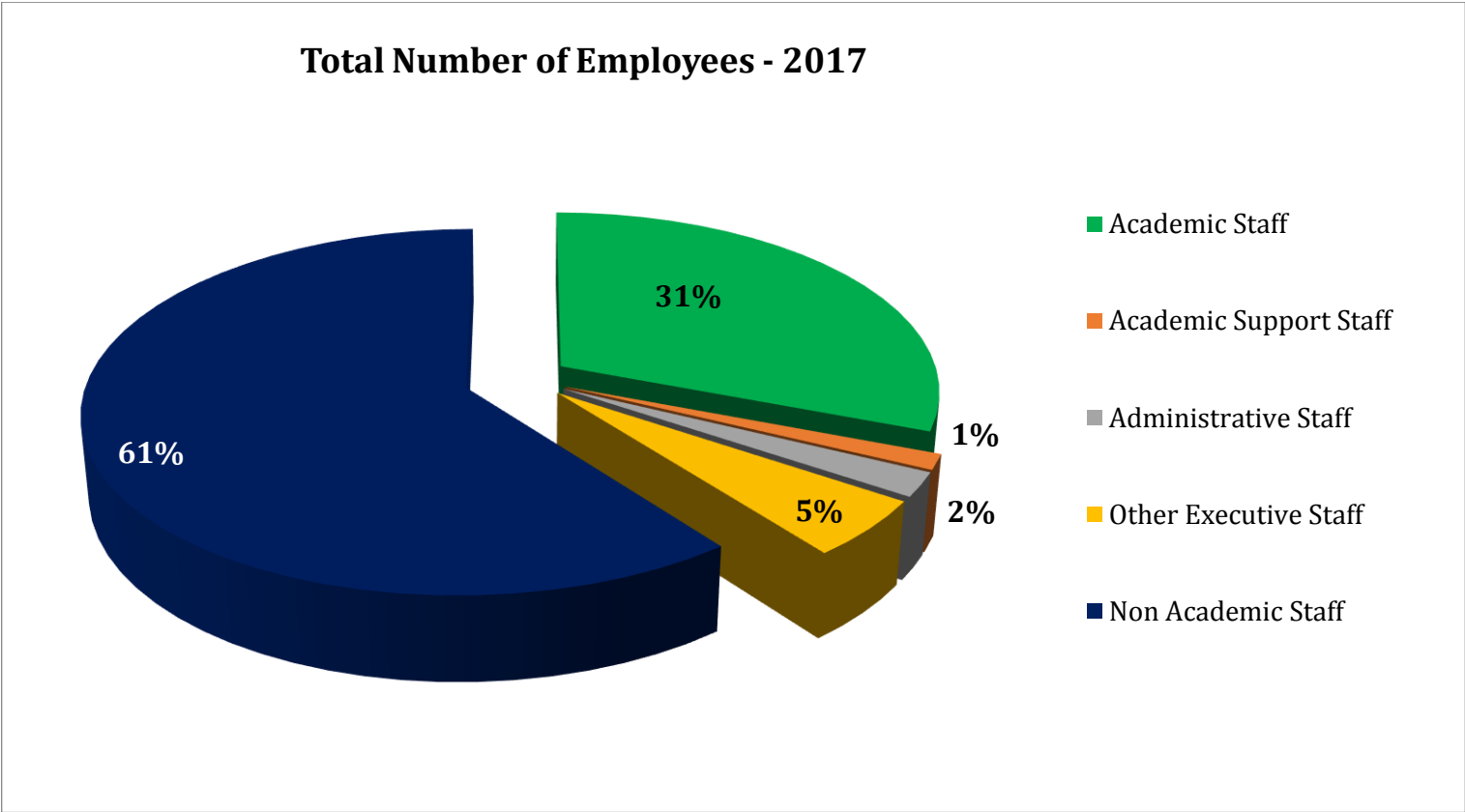
Lib. – Library

RES – Regional Educational Services

Admin. - Administration

CETMe – Centre for Educational Technology and Media

Chart 4.1.1 - Total Number of Employees - 2017



4.2 Employment Statistics

Table 4.2.1 - Total Number of Employees by Positions (2016 - 2017)

Status	2016		2017	
	P	T	P	T
Academic Staff	318	20	313	29
Academic Support Staff	13	108	14	122
Administrative Staff	24	02	24	05
Other Executive Staff	54	0	52	0
Non-Academic Staff	586	59	615	04
Total	995	189	1018	160
%	84.04	15.96	86.42	13.58
Grand Total	1184		1178	

P = Permanent T = Temporary

Table 4.2.2 - Academic and Academic Support Staff by Cadre Provision and Staff Position - 2017

Faculty/Library	Cadre Provision		Total	Staff Position		Total
	Permanent	Temporary		Permanent	Temporary	
Education	40	02	42	39	10	49
Engineering Technology	99	35	134	89	38	127
Human and Social Sciences	81	04	85	68	07	75
Natural Sciences	110	59	169	89	77	166
Health Science	11			13	-	13
Library	09	-	09	09	-	09
RES	28	33	61	15	22	37
CETMe	07	-	07	05	-	05
Total	374	133	507	327	154	481
%	73.77	26.23	100.00	67.98	32.02	100.00

Table 4.2.3 - Academic Staff by Category

Faculty Staff	2016	%	2017	%
Senior Professor/ Professor	22	6.85	21	6.60
Senior Lecturer	157	48.91	167	52.52
Lecturer	129	40.19	116	36.48
Academic Support Staff	13	4.05	14	4.40
Sub Total	321	100.00	318	100.00
Library Staff				
Librarian	01	10.00	01	11.11
Deputy Librarian	01	10.00	01	11.11
Senior Assist. Librarian	05	50.00	05	55.55
Assist. Librarian	03	30.00	02	22.22
Sub Total	10	100	09	100
Grand Total	331		327	

Chart 4.2.1 - Academic Staff by Category (2012 - 2017)

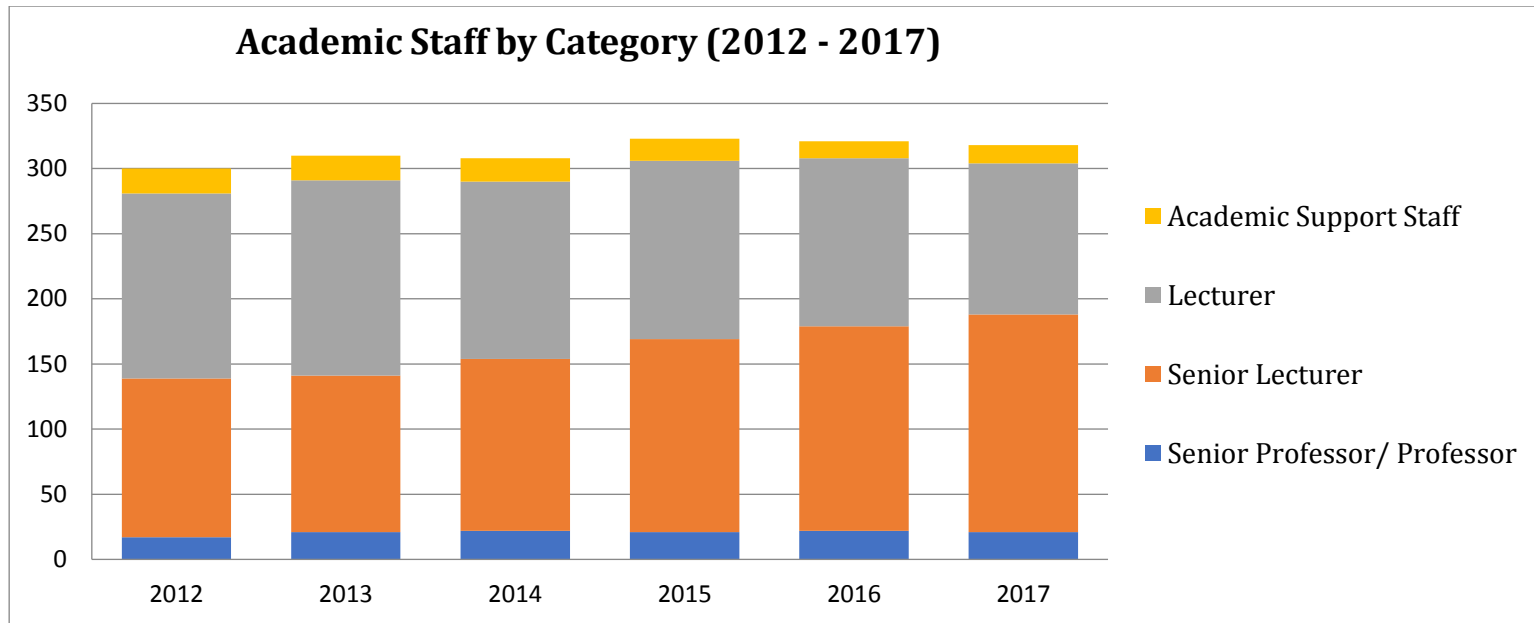


Table 4.2.4 - Academic Staff Categorized by Highest Academic Qualifications - 2017

Faculty/Library	Number of Members			
	PhD and Comparable Degrees	Master's Degrees	Bachelor's Degrees	Total
Education	11	22	6	39
Engineering Technology	32	34	20	86
Humanities and Social Sciences	20	34	13	67
Natural Sciences	41	39	7	87
Health Sciences	3	5	5	13
RES/CETMe	2	8	2	12
Library	2	6	1	9
Total	111	148	54	313
%	35.46	47.28	17.25	100

Table 4.2.5 - Academic Staff (Permanent Cadre) by Category, Gender and Faculty- 2017

Position	Female / Total	Eng. Tech	Education	HSS	Natural Science	Health Science	Library	RES	CETMe	Total
Senior Professor / Professor	F	1	2	1	6	-	-	-	-	10
	T	5	3	2	11	-	-	-	-	21
Senior Lecturer	F	17	15	24	25	5	-	1	2	89
	T	49	26	37	46	6	-	1	2	167
Lecturer	F	11	6	17	20	5	-	1	1	61
	T	32	10	28	30	7	-	6	3	116
Academic Support Staff	F	-	-	-	-	-	-	2	-	2
	T	3	-	1	2	-	-	8	-	14
Librarian	F	-	-	-	-	-	1	-	-	1
	T	-	-	-	-	-	1	-	-	1
Deputy Librarian	F	-	-	-	-	-	1	-	-	1
	T	-	-	-	-	-	1	-	-	1
Senior Assistant Librarian	F	-	-	-	-	-	3	-	-	3
	T	-	-	-	-	-	5	-	-	5
Assistant Librarian	F	-	-	-	-	-	2	-	-	2
	T	-	-	-	-	-	2	-	-	2
Total	F	29	23	42	51	10	7	4	3	169
	%	32.58	58.97	61.76	57.30	76.92	77.78	26.67	60.00	51.68
	T	89	39	68	89	13	9	15	5	327
	%	100	100	100	100	100	100	100	100	100

F = Female **T** = Total

Table 4.2.6 - Administrative, Professional and Non-Academic Staff by Category – 2017

Staff Category	Cadre Provision		Total	Staff Position		Total
	Permanent	Temporary		Permanent	Temporary	
Assistant Bursar	4	-	4	3	-	3
Assistant Registrar	7	-	7	7	-	7
Asst. Director	25	-	25	25	-	25
Asst. Internal Auditor	1	-	1	1	-	1
Asst. Network Manager Gr.II	3	-	3	1	-	1
Asst. Printer	2	-	2	1	-	1
Audio-Visual Tech. Officer Gr.I	11	-	11	10	-	10
Audio-Visual Tech. Officer Gr.II	3	-	3	1	-	1
Audit-Assistant Gr.II	2	-	2	2	-	2
Binding Foreman (LG)	2	-	2	2	-	2
Blacksmith Gr.II	1	-	1	1	-	1
Book Binder (Press)	3	-	3	4	-	4
Book-Binder	4	-	4	3	-	3
Staff Asst.(Book-Keeping)	3	-	3	2	-	2
Book-Keeper		-		1	-	1
Bursar	1	-	1	1	-	1
Care-Taker	6	-	6	6	-	6
Carpenter Gr.II	5	-	5	5	-	5
Chief Tech. Officer	1	-	1	1	-	1
Technical Officer/Chief	1	-	1	2	-	2
Technical Officer/Senior Staff	47	-	47	2	-	2
Staff Technical Officer Gr.II		-		9	-	9
Technical Officer		-		18	-	18
Trainee Technical Officer		-		7	-	7
Chief Security Officer	2	-	2	1	-	1
Clerical Services/ Staff Asst	104	-	105	12	-	12
Clerical Service/Senior Staff Asst.		-		29	-	29

Clerk Gr.III		-		49	1	50
Management Assistant Gr.III		-		20	-	20
Clerk Cum Data Entry Operator	3	-	3		-	0
Senior Staff Assistant/Computer Application Assistant	65	-	65	5	-	5
Staff Assistant/Computer Application Assistant		-		1	-	1
Computer Application Asst.		-		53	-	53
Senior Staff Asst./Data Entry Operating		-	26	8	-	8
Data Entry Operator	26	-		18	-	18
Senior Computer Operator	4	-	4	2	-	2
Computer Operator Gr.I		-	0	1	-	1

Staff Category	Cadre Provision		Total	Staff Position		Total
	Permanent	Temporary		Permanent	Temporary	
Computer Programmer	1	-	1	1	-	1
Craft Demonstrator	10	-	10	10	-	10
Curator (Landscape) Gr.III	1	-	1	1	-	1
Cycle Orderly	2	-	2	1	-	1
Day Care Assistant	2	-	2	2	-	2
Deputy Bursar	1	-	1	1	-	1
Deputy ISM	1	-	1	1	-	1
Deputy Registrar	1	-	1	1	-	1
Director/CG	1	-	1	-	1	1
Director/CETMe	1	-	1	-	-	0
Director/IT	1	-	1	1	-	1
Director/Operations	1	-	1	1	-	1
Director/Public Relations	1	-	1	1	-	1
Director/RES	1	-	1	-	-	0

Senior Draughtsman		-	5	4	-	4
Draughtsman	5	-		1	-	1
Driver	22	-	22	21	-	21
Electrician	5	-	5	4	-	4
Electronics Engineer -II	2	-	2	2	-	2
Electronics Engineer -III	1	-	1	1		1
Fitter	1	-	1	1	-	1
Foundryman	1	-	1	1	-	1
Gardener	3	-	3	1	-	1
Guillotine Operator	1	-	1	1	-	1
Health Service Attendant	1	-	1	-	-	0
Health Service Labourer	8	-	8	7	-	7
Illustrationist	3	-	3	1	-	1
Information Systems Manager	1	-	1	1	-	1
IT Works Manager	1	-	1	1	-	1
Junior Litho Artist	1	-	1	1	-	1
Junior Litho Machine Operator	1	-	1	1	-	1
Junior Plate Maker	1		1	1	-	1
Lab Attendant	29	-	29	27	-	27
Labourer		-		103	-	103
Works Aid	124	-	124	14	-	14
Karyala Karya Sahayake		-		5	-	5
Library Attendant	2	-	2	2	-	2
Litho Artist	2	-	2	2	-	2
Litho Machine Attendant	1	-	1	1	-	1
Litho Machine Operator	5	-	5	4	-	4
Lorry Cleaner	1	-	1	1	-	1
Machinist	1	-	1	1	-	1
Media officer	1	-	1	-	-	0
Mason	4	-	4	4	-	4

Staff Category	Cadre Provision		Total	Staff Position		Total
	Permanent	Temporary		Permanent	Temporary	
Medical Officer	1	-	1		1	1
Motor Mechanic	2	-	2	2	-	2
Nursing Officer	1	-	1	1	-	1
Office Machine Operator	5	-	5	5	-	5
Pharmacist	1	-	1	1	-	1
PHI	1	-	1	1	-	1
Plumber	3	-	3	3	-	3
Pre-School Assistant	6		6	6		6
Press Assistant	1	-	1	1	-	1
Process Camera Operator	1	-	1	1	-	1
Programme Cum Systems Analyst I	7	-	7	2	-	2
Programme Cum Systems Analyst II		-	0	3	-	3
Programme Assistant	1	-	1	-	-	0
Registrar	1	-	1	1	-	1
Roneo Machine Operator	1	-	1	1	-	1
Security Guard	22	-	22	22	-	22
Security Inspector	5	-	5	5	-	5
Senior Assistant Bursar	2	-	2	3	-	3
Senior Assistant Registrar	5	-	5	4	-	4
Senior Asst. Director	2		2	1	-	1
Statistical Officer Gr. I	1	-	1	1	-	1
Senior Personal Secretary to the Principal Executive Officer	1	-	1	1	-	1
Senior Staff Asst./Library Information Services (Matara)		-	0	1	-	1
Staff Assistant/Library Information Assistant		-	0	1	-	1

Staff Category	Cadre Provision		Total	Staff Position		Total
	Permanent	Temporary		Permanent	Temporary	
Library Information Assistant	18	-	18	16	-	16
Shroff Gr.III	3	-	3	3	-	3
Staff Asst./Stenography			0	2	-	2
Staff Asst/Data Entry Operating		-	0	8	-	8
Stenographer Gr. II		-	14	4	-	4
Stenography/Senior Staff Asst.		-		7	-	7
Stenography/Staff Asst.	14	-		1	-	1
Store-Keeper Gr.III		-	9	6	-	6
Store-Keeping/ Senior Staff Assistant	9	-		1	-	1
Store-Keeping/Staff Assistant		-		1	-	1
Storeman	1	-	1	-	-	0
Sub Warden (Part time)	2	-	2		-	0
Supervisor (Landscape)	2	-	2	2	-	2
Supervisor (Civil/Electrical)	3		3	3		3
Supervisor (Maintenance)Gr.III	2		2	2		2
Telephone Operator Cum Receptionist-II	5	-	5	4		4
Tool Issuer Gr. II	2	-	2	2		2
Training Engineer	1	-	1	1		1
Type-Setter (Lower Grade)	1	-	1	0		0

Typing/Senior Staff Assistant	13	-	13	2		2
Typing/Staff Assistant		-		4		4
Typist Gr.III		-		7		7
University Printer	1	-	1	0		0
Video Editor	1	-	1	0		0
Warden(Part-time)	1	-	1			0
Web Administrator	1	-	1	0		0
Welder	1	-	1	1		1
Works Engineer (Civil) - I	1	-	1	1		1
Works Engineer (Civil) - II	1		1	1		1
Works Superintendent	2	-	2	2		2
Workshop Engineer	1	-	1			0
Web Administrator	1	-	1			0
Tool Issuer Gr. II	2	-	2	2		2
Welder	1	-	1	1		1
Total	749	-	749			704

Table 4.2.7 - Centre-wise Staff Strength - 2017

Centre	Academic/Academic Support Staff		Administrative	Other Staff		Total
	Permanent	Temporary	Permanent	Permanent	Casual	
Ambalangoda	01			02		03
Ambalantota			01	02		03
Ampara			01	03		04
Anuradhapura	02			07		09
Badulla			01	03		04
Banadarawela			01	02	02	05
Batticaloa	01		01	05		07
Colombo	07		03	32	09	51
Galle	01			05		06
Gampaha	02		01	03		06
Hambantota				01		01
Jaffna	01		01	04	01	07
Kalutara			01	05		06
Kandy	07		01	33	08	49
Kegalle			01	02		03
Kilinochchi			01	01		02
Kuliyapitiya			01	0		01
Kurunegala	02		01	06		09
Matara	03		01	13	01	18
Monaragala				02	01	03
Mullaitivu			01	0		01
Polonnaruwa			01	03		04
Puttalam			01	02	02	05
Ratnapura			01	04		05
Trincomalee			01	02	01	04
Vavuniya			01	02	01	04
Total	27		23	144	26	220

Chapter 05

Finance

Chapter 05

5.1. Finance

Table 5.1.1 - Statement of Financial Position

Item	2016	2017
Assets		
Current Assets		
Cash at Bank	90,084,219	77,064,304
Cash in Hand		
Receivables	191,873,329	274,207,924
Inventories	143,553,777	156,401,851
Advances & Pre-Payments	9,786,175	12,676,772
Loans & Advances to Staff	61,740,087	76,146,009
<i>Total Current Assets</i>	497,037,587	596,496,859
Non-Current Assets		
Property, Plant & Equipment	7,368,353,462	7,216,072,495
Capital Work in Progress	30,887,304	11,059,501
Intangible Assets	33,037,854	34,847,854
Investments	1,152,903,129	1,455,995,694
<i>Total Non-Current Assets</i>	8,585,181,748	8,717,975,543
<i>Total Assets</i>	9,082,219,335	9,314,472,402

Liabilities		
Current Liabilities		
Deposit Payables	44,824,526	47,938,055
Payables	28,451,659	50,061,614
Advances from Customers - University Press	567,562	479,570
Short Courses Income Received in Advance	39,559,511	76,606,403
Tuition Fees Received in Advance	96,762,782	126,655,531
Other Income Received in Advance	290,200	311,400
Accrued Expenditure	98,696,585	119,169,686
Total Current Liabilities	309,152,825	421,222,259
Non-Current Liabilities		
CERC Fund	18,456,510	20,572,375
Specific Funds (Restricted)	276,675,049	339,824,774
Provision for Gratuity	323,486,950	366,807,961
Total Non-Current Liabilities	618,618,509	727,205,110
Total Liabilities	927,771,334	1,148,427,370
Net Assets	8,154,448,001	8,166,045,032
Net Assets/Equity		
Capital Grant – Spent	425,637,694	439,764,244
Capital Grant –Unspent	23,886,841	0
Contribution to Capital Outlay from Outside Grants	9,444,663	12,292,540
Donations	944,152,581	834,837,027
General Reserve	770,154,693	895,465,643
Revaluation Surplus	5,981,171,528	5,983,685,579
Total Net Assets/Equity	8,154,448,001	8,166,045,032

Table 5.1.2A – Details of Revenue

Revenue	2016		2017	
	LKR	%	LKR	%
Government Grant for Recurrent Expenditure	1,000,000,000	46.30	1,112,575,000	39.90
Capital Grant for Research	5,811,159	0.27	15,666,226	0.56
Interest from Investments	71,304,546	3.30	108,059,176	3.88
Interest from Loans & Advances	2,497,350	0.12	2,660,334	0.10
Registration Fees	9,265,112	0.43	22,312,098	0.80
Students Income	812,814,777	37.63	1,201,227,143	43.08
Examination Fees/Certificate Fees	2,243,569	0.10	4,305,118	0.15
Library Fines	355,158	0.02	437,290	0.02
Hostel Fees	1,081,250	0.05	2,125,375	0.08
Supplementary Fees	-	-	3,490	0.00
Income from Violation of Bonds	7,877,124	0.36	4,653,994	0.17
Income from Short Courses & Other Sources	45,709,739	2.12	75,891,900	2.72
Sale of Publications	2,441,072	0.11	1,906,719	0.07
Sale of Applications	17,195,913	0.80	25,091,951	0.90
Hiring of Vehicles	185,774	0.01	129,395	0.00
Rent from Properties	2,375,084	0.11	3,164,540	0.11
Sale of Old Stores	-	-	351,087	0.01
Miscellaneous Income	3,962,748	0.18	9,122,597	0.33
Amortization of Donations & Capital Outlay	105,917,239	4.86	117,931,706	4.23
Amortization of Capital Grants – Spent	69,939,331	3.24	80,944,065	2.90
Total Revenue	2,160,976,945	100.00	2,788,559,203	100.00

Chart 5.1.1 - Distribution of Revenue (2016-2017)

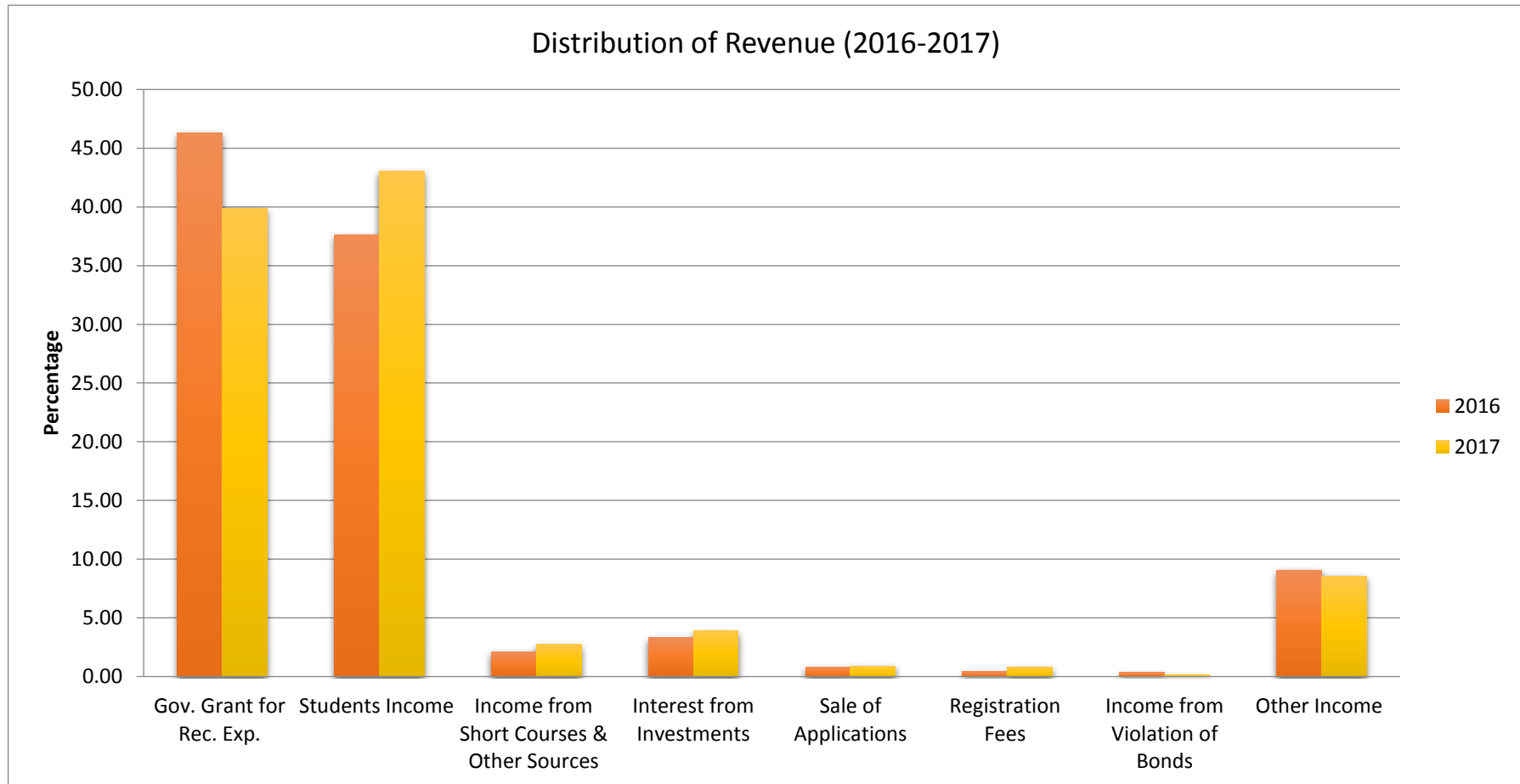


Table 5.1.2B – Details of Expenditure

Expenses	2016		2017	
	LKR	%	LKR	%
General Administration & Staff Services	341,109,247	14.67	395,422,569	14.98
Depreciation	335,167,628	14.51	381,834,830	14.46
Impairment of receivable(Students)	24,652,058	1.07	28,380,797	1.08
Impairment of receivable(Staff)	0	0.00	0	0.00
Academic Services	1,394,069,789	60.34	1,593,463,800	60.36
Teaching Resources	90,939,938	3.94	97,029,215	3.68
Health Services	3,720,469	0.16	4,711,877	0.18
Maintenance of Lands & Buildings	45,505,461	1.97	47,119,843	1.78
Ancillary Activities	77,260,411	3.34	92,073,948	3.49
Total Expenses	2,312,425,001	100.00	2,640,036,879	100.00
Surplus/(Deficit) for the Period	(151,448,055)		148,522,325	
Disbursement of Short Courses Funds	(13,373,830)		(22,969,155)	
	(164,821,885)		125,553,169	

Chart 5.1.2 - Distribution of Expenses (2016 - 2017)

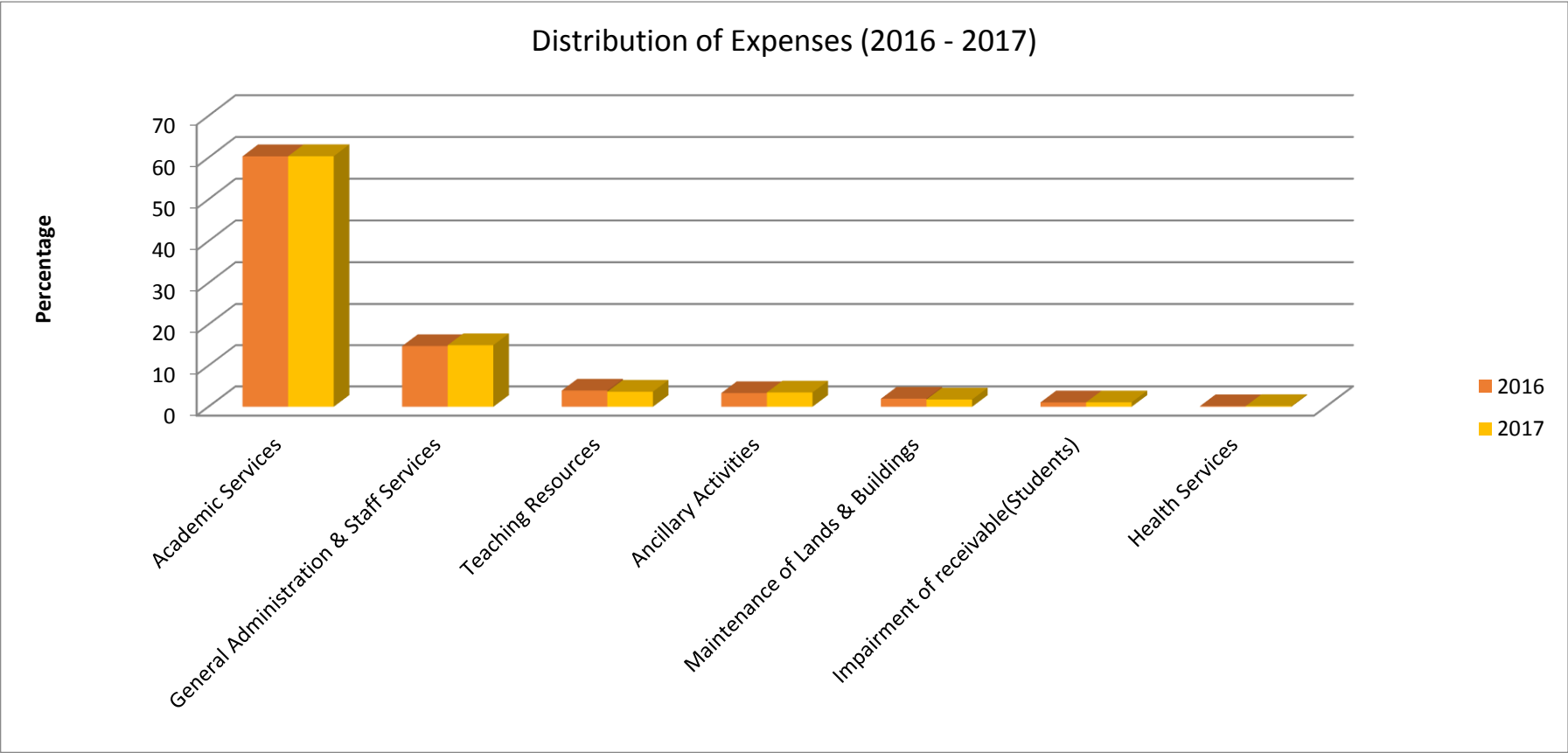


Table 5.1.3 - Classification of Expenses by Nature

Item	2016		2017	
	LKR	%	LKR	%
Operating Revenue				
Recurrent Grant	1,000,000,000	46.58	1,112,575,000	40.23
Capital Grant Research	5,811,159	0.27	15,666,226	0.57
Amortization of Donations	105,917,239	4.89	117,931,706	4.26
Amortization of Capital Grant	69,939,331	3.26	80,944,065	2.93
Other Income	933,599,476	43.49	1,385,550,306	50.10
Other Funds	32,335,909	1.51	52,922,745	1.91
Total Operating Revenue	2,147,603,115	100.00	2,765,590,048	100.00
Operating Expenses				
Personal Emoluments	1,369,088,721	59.24	1,503,377,231	56.99
Travelling	6,185,528	0.27	8,730,050	0.33
Supplies and Consumable Used	44,488,194	1.92	46,532,248	1.76
Maintenance	36,025,015	1.56	53,559,716	2.03
Services on Contract	279,318,473	12.09	342,022,001	12.96
Research and Development	8,332,192	0.36	12,031,721	0.46
Depreciation and Amortization Expenses	335,167,628	14.50	381,834,830	14.47
Other Operating Expenses	232,609,637	10.06	290,053,207	10.99
Total Operating Expenses	2,311,215,387	100.00	2,638,141,005	100.00
Surplus/(Deficit) from Operating Activities	(163,612,273)		127,449,043	
Finance Cost	(1,209,612)		(1,895,874)	
Total Non-Operating Revenue (Expenses)	(164,821,885)		125,553,169	
Net Surplus/(deficit) for the Period	(164,821,885)		125,553,169	

Chart 5.1.3 - Operating Expenses (2016-2017)

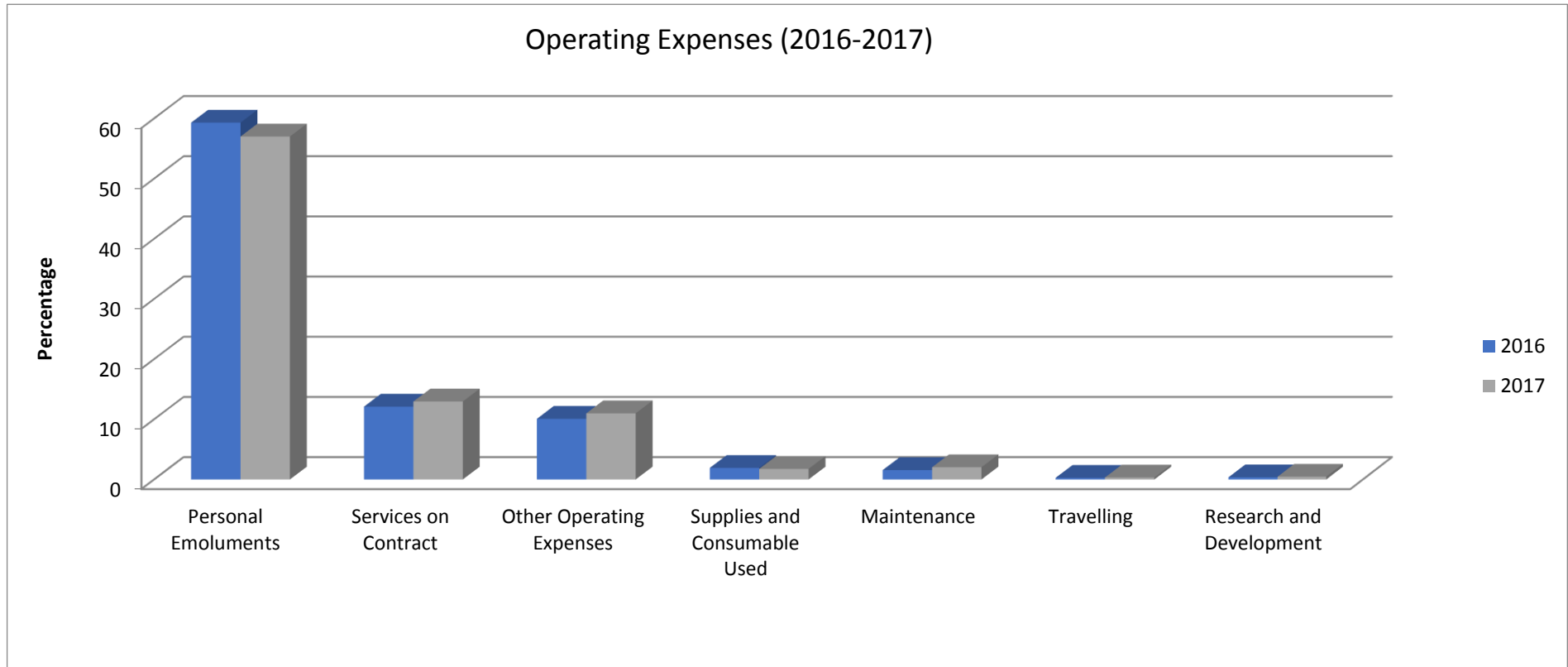


Table 5.1.4 - Nature of Capital Expenditure (2016 - 2017)

Nature	2016		2017	
	LKR	%	LKR	%
Acquisition of Furniture & Other Office Equipment	140,447,312.00	29.46	149,106,805	68.18
Acquisition of Machineries	11,268,187.00	2.37	7,126,108	3.26
Acquisition of Buildings & Structures	308,960,291.00	64.79	55,869,212	25.54
Other (Library Books, Cloaks and Motor Vehicles)	16,158,262.00	3.38	6,608,874	3.02
Total	476,834,052.00	100.00	218,710,999	100.00

Chart 5.1.4 - Distribution of Capital Expenditure

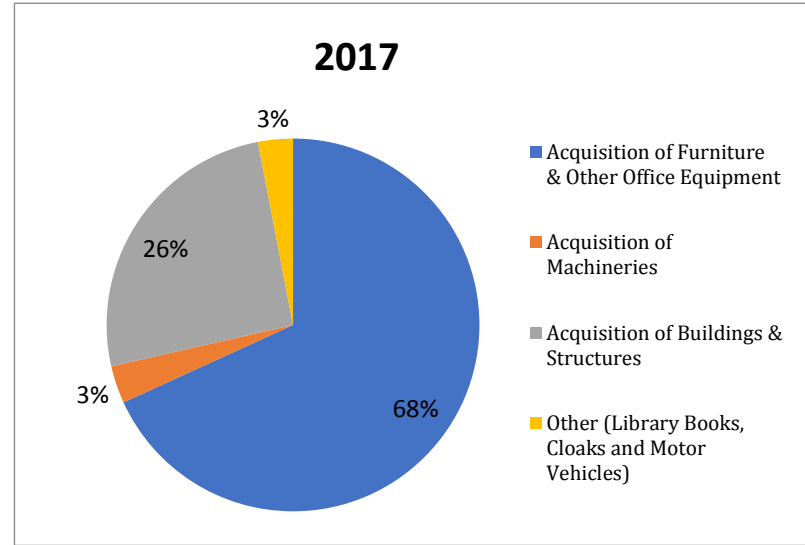
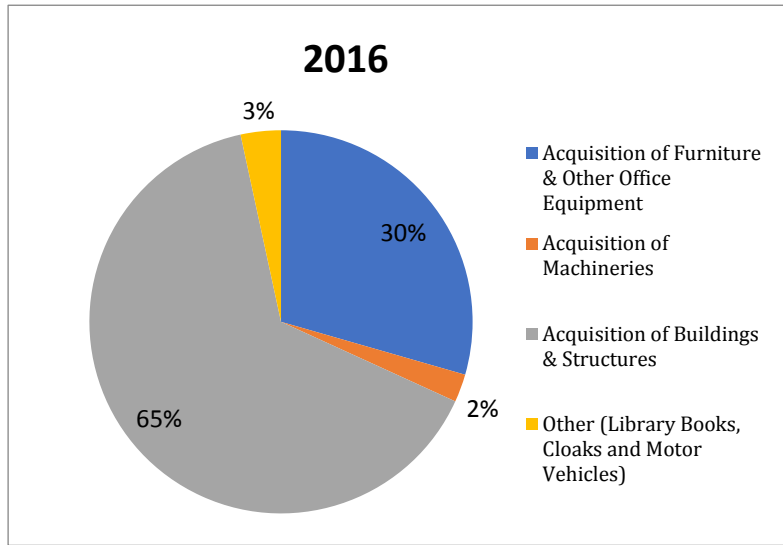


Table 5.1.5 - Faculty Wise Income and Expenditure – 2016 /2017

Faculty	Income				Expenditure			
	2016		2017		2016		2017	
	LKR	%	LKR	%	LKR	%	LKR	%
Education	106,671,433	19.35	202,626,281	19.53	164,652,673	14.59	193,253,447	15.45
Engineering Technology	5,677,337	1.03	174,585,904	16.83	303,158,736	26.86	338,928,294	27.10
Humanities and Social Sciences	222,477,718	40.37	301,897,623	29.10	293,103,324	25.96	300,348,428	24.02
Natural Sciences	144,526,541	26.22	219,160,052	21.13	319,102,822	28.27	356,959,108	28.54
Health Sciences	71,804,683	13.03	139,134,726	13.41	48,745,508	4.32	61,106,824	4.89
Total	551,157,712	100.00	1,037,404,586	100.00	1,128,763,063	100.00	1,250,596,101	100.00

Chart 5.1.5 - Faculty wise Income & Expenditure – 2016

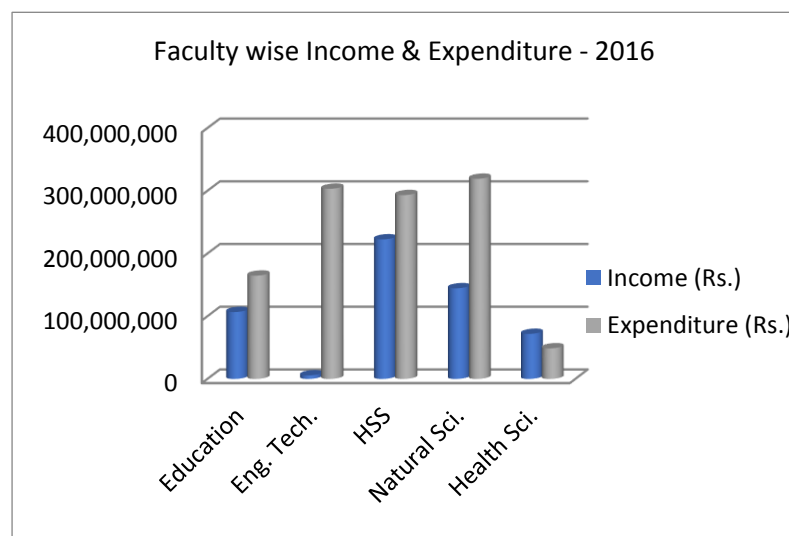
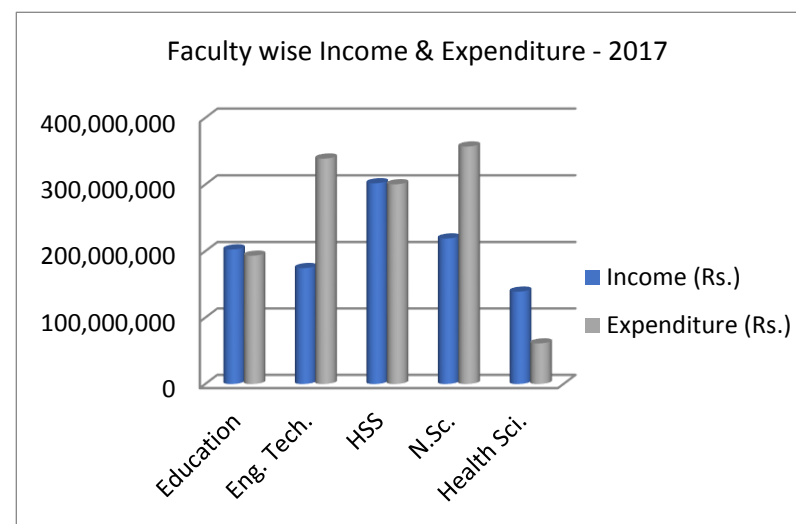


Chart 5.1.6 - Faculty wise Income & Expenditure - 2017



Chapter 06

Academic Support services

Chapter 06

6.1 Academic Support Services

6.1.1 Library Network

Table 6.1.1 - Collection of Books and Periodicals

Location	2016		2017	
	Bound Volumes of Periodicals	Books	Bound Volumes of Periodicals	Books
OUSL – Main Library	2,560	99,734	335	101,560
Total of Regional Centres	-	34,553	963	38,486
Total of Study Centres	-	16,387	-	14781
Grand Total	2,560	150,674	1,298	154,827

Table 6.1.2 - Library Items – Added Collection (2013 - 2017)

Nature	2013		2014		2015		2016		2017	
	Books	Periodicals	Books	Periodicals	Books	Periodicals	Books	Periodicals	Books	Periodicals
Purchase / Subscriptions	1,988	81	1,655	61	1,457	68	1,131	53	1,270	36
Exchange	-	03	-	-	-	12	-	10	-	05
Donations	662	30	440	97	630	177	682	291	556	241
Total	2,650	114	2,095	163	2,087	257	1,813	354	1,826	282

Table 6.1.3 - Digital Collection

Online Resources	Number of items		
	2015	2016	2017
Past Question Papers	6742	7619	8536
Research Papers	301	319	347
Thesis/Thesis Abstract	261	48	302
OUSL Journal	-	-	83
OUSL Annual Academic session	-	-	176
Journal of Engineering Technology	-	-	47
OUSL library journal	-	-	1

Table 6.1.4 - Distribution of Member Enrolment

Category	2016				2017			
	Main Library	Regional Centres			Main Library	Regional Centres		
		Kandy	Matara	A'pura		Kandy	Matara	A'pura
Academic Staff	22	01	01	02	24	06	2	2
Academic Support Staff	20	05	-	03	05	-	-	-
Administrative Staff	01	-	-	-	03	-	-	-
Non-Academic Staff	14	-	-	-	17	-	1	3
Students	435	103	61	09	634	235	47	34
Total	492	109	62	14	683	241	50	39

Table 6.1.5 - Number of Physical Visits by Users

Location	Number Visited	
	2016	2017
Main Library	51,625	58,237
Regional Centres	35,730	38,154
Total	87,382	96,391

Table 6.1.6 - Online Visits by Users

Online Material Accessed	Number of online visits	
	2016	2017
Repository Past Question Papers	45,600	45,000
Online Library Catalogue	150,000	160,000
Research Archive – Articles	15,000	14,000
Library Website	45,000	50,000
Total	255,600	269,000

Table 6.1.7 - Audio Visual Resource Centre - Capacity (2012 – 2017)

Item	2012	2013	2014	2015	2016	2017
Audio Visual Materials (Numbers)	2,925	2,966	2,978	3,034	3,037	3,213

Table 6.1.8 – Reader Services Statistics of Main Library during (2016 - 2017)

	2016	2017
Books Issued	17,725	16,668
Books Referred	18,449	18,716
Academic Inquiries	-	-
Documents Delivered	212	151

Table 6.1.9 - Details of Programme, Seminars & Workshops held during 2017

Library	No	Workshop	No. of Workshops
Main	1	SPSS for Data Analysis	03
	2	Reference Management with Zotero	01
	3	Reference Management with Mendeley	01
	4	Writing a Literature Review	01
	5	Library Services for the Learners	02
	6	Google Apps	02
	7	Citation Styles	01
	8	Mind Mapping for Research	01
	9	Mind Mapping Techniques of Effective Learning	01
MRC	1	Workshop on Bibliometrics, Scietometrics& Webometrics Analysis for Research Management	01
	2	Workshop on "Research Methodology"	01
	3	Orientation Programme (BA/ BSc. /BMS)	01
	4	EFIL Programme (BSc. Nursing)	01
	5	User education programme (BMS/ BA)	05
KRC	1	Workshop -Bibliometrics and Scientometrics	01
	2	Workshop - Research skills for post graduate students	01
	3	Workshop - Citation styles	01
	4	Workshop – Online resources for agriculture Students	01
	5	Workshop – Effective use of library web page for information needs (BA Undergraduates)	01
	6	EFIL Programme session – Effective reading skills	01
	7	Library orientation programmes	07
KuRC	1	Workshop on Research Methodology	01
	2	Workshop on Bibliometrics, Scietometric & Webometric Analysis for Research Management	01
	3	Workshop on Electronic Information Resources (EIR) for Academic Purposes	03

6.2 Centre for Educational Technology and Media (CETMe)

Table 6.2.1 - Performances by the Centre for Educational Technology and Media (CETMe)

Function	Number of occasions / times	
	2016	2017
Still Photographs done of Major Events of the OUSL	40	42
Production of Programmes for the OUSL and Outside Institutions	44	48
Advertisements	22	28
Brochures	02	4
Graphics and Illustrations for Course Material	-	28
Preparation of Cover Designs	05	6
Preparation of Posters/Banners	12	12
Preparation of Centre Boards	15	-
Language Editing of OUSL Publications	24	28
Convocation and Award ceremony	03	03
Moodle Administration	Throughout the year	Throughout the year
Programme Coordination	Throughout the year	Throughout the year
Reviewing of Online Courses	200	217
Fully Online Short Course	01	-

6.3 Printing Press

Table 6.3.1 - Printing of Material by the Press of the OUSL

Month	Number of Copies Printed					
	*Course Material		**Brochures		***Other Materials	
	2016	2017	2016	2017	2016	2017
January	31,015	43,098	6,950	1,950	96,200	72,150
February	18,620	39,369	31,775	4,700	180,410	112,905
March	50,625	56,738	8,875	3,950	406,095	529,298
April	41,100	27,492	13,840	350	21,001	5,155
May	55,092	37,633	1,800	5,150	291,760	88,795
June	49,100	35,495	10,975	8,910	92,160	595,960
July	52,105	17,816	11,150	5,110	12,572	46,935
August	43,240	18,128	12,400	850	23,351	105,477
September	63,260	18,409	6,800	-	187,755	49,485
October	45,485	30,940	1,375	5,300	275,580	177,412
November	81,890	23,767	24,630	20,600	839,970	296,868
December	70,622	38,234	7,475	15,000	630,120	78,305
Total	602,154	387,119	138,045	71,870	3,056,974	2,158,745

*Course Material includes, Text Books for students

** Brochures include Leaflets, Application Forms, Handouts, etc.

*** Other Material includes the printing of ordinary documents for administrative purposes

6.4 Staff Development Centre

Table 6.4.1 – Workshops Conducted By Sdc In Year 2017

No	Title of the Course	Duration	Medium	No of students registered	No of students completed
01	Training Programme for Assistant Directors/Regional Educational Services	2, ½ days	English & Sinhala	05	05
02	Training Workshop on Fire safety, Fire fighting and Casualty rescue for employees of the University	½ day	Sinhala	88	88
03	Induction Training for Senior Lecturers in OUSL & University of Moratuwa – 2017	10 days	English	13	12
04	The Guest Lecture on Gender Issues for Academic Staff	2 hours	English	-	20
05	Workshop on Open Education Resources	01 day	English	10	10
06	13th SDC-SLAIHEE Joint Annual Conference	01 day	English	130	130
07	Workshop on Using OMIS for Scheduling Academic Activities/Timetable	01 day	English & Sinhala	35	35
08	Workshop on Report Writing the Audit Quarries	½ day	English & Sinhala	55	55
10	Workshop on Skills Development for OUSL Staff (For RES staff at Anuradhapura regional centre)	01 days	Sinhala	33	33
11	Workshop on Research Methodology	03 days	English	23	23
12	Workshop on Procurement and Inventory Management	02 days	English & Sinhala	40	40
13	Workshop for Security Officers	½ day	Sinhala	22	22
14	Two Day Residential Outward/Inward Bound Training Programme at Hanwella for non-academic staff	02 days	English & Sinhala	34	33
15	Workshop on Paralysis by Meeting	½ day	English	20	20
16	CTHE Programme for Probationary Lecturers - 2017	150 hours	English	24	24
17	Workshop on Positive Parenting	3 hours	English & Sinhala	25	25
18	Workshop on Conflict Resolution	3 hours	English	07	07
19	Workshop on Digital Science, Learning, Character and Abuse	2 hours	English	28	28
20	Workshop on Bibliometric, Scientometric and Webometric - In collaboration with Library	2 days	English	22	22

6.5 Residential Facilities

Table 6.5.1 - Accommodations Available under Temporary Residential Facility (TRF)

Centre	Type	2016		2017	
		Number of Halls	Places Available	Number of Halls	Places Available
Nawala	Men	01	200	01	208
	Women	01	200	01	176
Polgolla	Men	01	10	01	10
	Women	01	11	01	11
Matara	Men	01	20	01	20
	Women	01	18	01	18

Table 6.5.2 - Guest House Facilities Available at Regional Centres

Location	Rooms Available	Number of Guests
		2017
Nawala	04	534
Bandarawela	04	311
Kandy	04	323
Matara	03	119
Batticaloa	04	96
Anuradhapura	04	569
Jaffna	03	40
Total	26	1992

Chapter 07

Building & Floor Areas

Chapter 07

7.1. Buildings and Floor Areas

Table 7.1.1 - Faculties and Administrative Service Areas (Main Campus) 2017

Building	Area m ²	Area sq ft
Senate House	2,036.16	21,917.00
General Administration Building	4,130.47	44,460.00
Humanities and Social Sciences Faculty (HSS) Building	5,523.55	59,455.00
Library	2,975.31	32,026.00
Media House	2,228.19	23,984.00
S&T Building	10,241.34	110,236.95
New Auto Mobile Lab	1,678.85	18,071.00
Health Care and Day Care Centre	3,822.73	41,147.50
Pre School	524.72	5,648.00
Education Faculty Building	2,636.40	28,378.00
Education Faculty Car Park	90.02	969
Block 20	13,630.46	146,717.12
Block 23 - Examination Hall	276.39	2,975.00
Block 24 - Examination Hall	459.87	4,950.00
Examination Hall 01	627.10	6,750.00
Examination Hall 02	218.51	2,352.00
Examination Hall 03 & Auditorium	1,252.33	13,480.00
New Examination Hall 04	1,033.97	11,129.61
New Examination Hall 05	747.48	8,045.79
Study Room	122.91	1,323.00
SDC Building	542.65	5,841.00
IT Building	84.73	912
Health Science, General Stores, Maintenance Workshop	2,686.01	28,912.00
Colombo Regional Centre (CRC) Entrance Building Phase	846.90	9,116.00
CRC Entrance Building Phase 02	2,512.37	27,042.89
Press	1,032.43	11,113.00
Central Dispatch Unit	1,163.01	12,518.50
Dispatch Garbage Room	29.08	313
Hostel	1,859.45	20,015.00
New Hostel	3,018.46	32,490.46
Guest House	360.00	3,875.00
Maintenance Division 's New Building	629.77	6778.8
Canteen - B 20	71.54	770
Central Campus Canteen	345.69	3,721.00
PET Machine Room	9.06	97.5
Security Hut - 01	3.34	36
Security Hut - 02	66.89	720
Security Hut - Narahenpita	13.01	140
Security Hut near Pre School	12.80	137.75
Car Park - HSS	155.10	1,669.50
Car park - SDC	214.79	2,312.00
Old PIO Building	59.94	645.2
PIO Building and Security Room	99.59	1,072.02
Sub Total	70,073.37	754,263.59

Table 7.2 - Other Service Areas 2017

Building	Area m ²	Area sq. ft.
Shrine Room	101.17	1,089.00
Generator Room	22.11	238
Fire Pump House	12.26	132
Air filter Room	28.34	305
Generator House - to convert to toilet	43.66	470
Generator House - Near Education Faculty	45.06	485
Transformer House	7.53	81
Transformer Room - Near Media House	43.20	465
Generator Room - Near Media House	27.78	299
Generator Room - Media House	32.70	352
Maintenance Labourers' Room -251	91.97	990
Sewerage Stores	141.77	1,526.00
HETC Project Building	230.40	2,480.00
Security Room (Late Services)	75.25	810
Bus Garage	74.32	800
Feeder Filler	17.37	187
Drivers' Room	81.75	880
Labourers' Room	85.01	915
Foundry Building	163.14	1,756.00
Water Tank	25.29	272.25
Sump	171.87	1,850.00
Sump	46.73	503.03
Sub Total	1,568.68	16,885.28
Grand Total	71,642.05	771,148.87

Table 7.3 - Regional and Study Centres 20176

Location	Hectares	Area m ²	Area sq. ft.
Colombo	14.119	78,361.57	840,050.09
Kandy	5.768	12,625.80	135,903.00
Matara	0.766	4,547.63	48,950.28
Matale	0.127	344.0	3702.78
Anuradhapura	0.217	4,996.02	53,756.65
Batticaloa	0.264	2,174.97	23,402.68
Batticaloa (New)	0.422	Bare Land	
Jaffna	0.324	2,345.36	25,245.24
Ambalangoda	0.202	812.30	8,740.35
Bandarawela	0.319	876.96	9,436.09
Galle	0.376	927.75	9,982.59
Gampaha	0.192	1,092.74	11,757.88
Kurunegala	0.167	1,099.15	11,826.85
Polonnaruwa	0.203	843.33	9,074.23
Ratnapura	0.156	711.90	7,660.04
Kegalle	0.363	328.44	3,534.01
Ampara	0.195	1,030.22	11,085.17
Ambalanthota	0.202	1590.6	17121
Kalutara	0.252	1,018.74	10,961.64
Monaragala	0.200	946.10	10,180.04
Puttalam	0.423	684.27	7,365.25
Vavuniya	0.197	661.48	7117.52
Killinochchi	0.202	312.15	3360.00
Mullathivu	0.163	185.81	2000.00