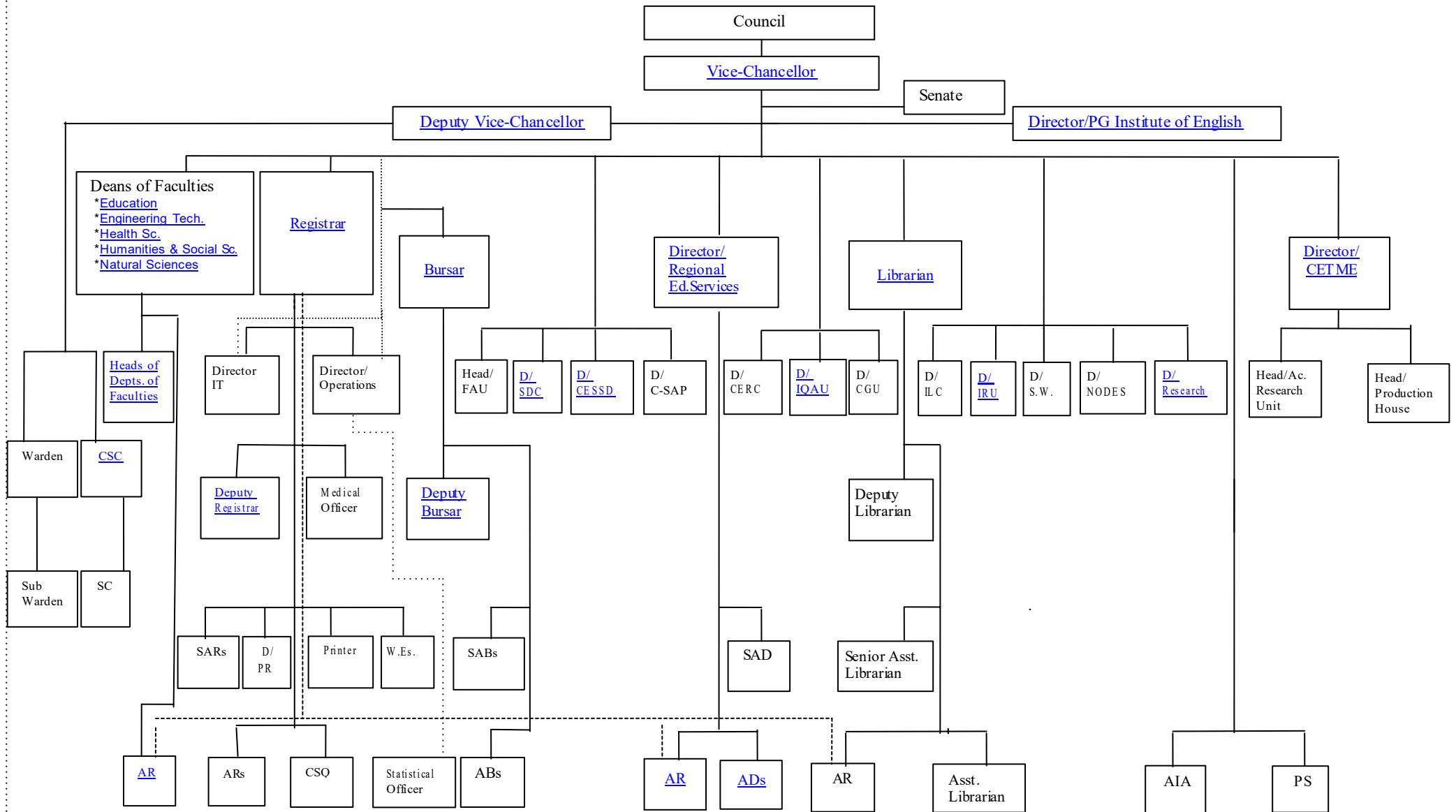


Organizational Chart – The Open University of Sri Lanka



D/IQAU – Director/Internal Quality Assurance Unit	D/CGU – Director/Career Guidance Unit	D/ILC – Director/Industry Liaison Centre	D/IRU – Director/International Relations Unit
D/SDC - Director/Staff Development Centre	D/NODES - Director/National On-line Distance Education Service	D/CERC - Consultancy and External Resources Centre	D/S.W. – Director/Student Welfare
D/C-SAP - Director/Self-funded Academic Programs	D/CESS – Director/Centre for Environmental Studies and Sustainable Dev.	CSC – Chief Student Counsellor	SC - Student Counsellor
Head/FAU – Foundation Academic Unit	SAR – Senior Assistant Registrar	SAB – Senior Assistant Bursar	D/PR – Director/Public Relations
SAD - Senior Assistant Director	W.Es. - Works Engineers	AR – Assistant Registrar	AB – Assistant Bursar
AD – Assistant Director	CSO – Chief Security Officer	AIA – Assistant Internal Auditor	PS – Personal Secretary

Heads of Depts. of Faculties

Faculty of Education

Department of Early Childhood and Primary Education

[Department of Secondary & Tertiary Education](#)

[Department of Special Needs Education](#)

Faculty of Engineering Technology

[Department of Agricultural and Plantation Engineering](#)

[Department of Civil Engineering](#)

[Department of Electrical & Computer Engineering](#)

[Department of Mechanical Engineering](#)

[Department of Mathematics and Philosophy](#)

[Department of Textile and Apparel Technology](#)

Faculty of Health Sciences

Department of Basic Science

[Department of Medical Laboratory Sciences](#)

[Department of Nursing](#)

[Department of Pharmacy](#)

[Department of Psychology and Counselling](#)

Faculty of Humanities & Social Sc

[Department of Management Studies](#)

[Department of Legal Studies](#)

[Department of Language Studies](#)

[Department of Social Studies](#)

Faculty of Natural Sciences

[Department of Botany](#)

[Department of Chemistry](#)

[Department of Computer Science](#)

[Department of Mathematics](#)

[Department of Physics](#)

[Department of Zoology](#)

Assistant Registrar of Faculties

[Assistant Registrar - Faculty of Education](#)

[Assistant Registrar - Faculty of Engineering Technology](#)

[Assistant Registrar - Faculty of Health Sciences](#)

[Assistant Registrar - Faculty of Humanities & Social Sc](#)

[Assistant Registrar - Faculty of Natural Sciences](#)